



Vertical Multistage Centrifugal Pumps

Submersibles and Electric



CONTENTS

VERTICAL MULTISTAGE CENTRIFUGAL PUMPS

Introduction	3
Applications	3
Performance range - LCR, LCRI, LCRN	3
Product range	4
Construction LCR 1s, 1, 2, 3, 4, 5, 10, 15 and 20	6
Construction LCRI, LCRN 1s, 1, 2, 3, 4, 5, 10, 15 and 20	6
Construction LCR 32 and 45	7
Construction LCRI, LCRN 32 and 45	7
Type keys	8
Motor electrical data	9
Performance curves LCR, LCRI, LCRN 1s	10
Performance curves LCR, LCRI, LCRN 1	11
Performance curves LCR, LCRI, LCRN 2	12
Performance curves LCR, LCRI, LCRN 3	13
Performance curves LCR, LCRI, LCRN 4	14
Performance curves LCR, LCRI, LCRN 5	15
Performance curves LCR, LCRI, LCRN 10	16
Performance curves LCR, LCRI, LCRN 15	17
Performance curves LCR, LCRI, LCRN 20	18
Performance curves LCR, LCRI, LCRN 32	19
Performance curves LCR, LCRI, LCRN 45	20
Technical data LCR 1s	21
Technical data LCRI, LCRN 1s	22
Technical data LCR 1	23
Technical data LCRI, LCRN 1	24
Technical data LCR 2	25
Technical data LCRI, LCRN 2	26
Technical data LCR 3	27
Technical data LCRI, LCRN 3	28
Technical data LCR 4	29
Technical data LCRI, LCRN 4	30
Technical data LCR 5	31
Technical data LCRI, LCRN 5	32
Technical data LCR 10	33
Technical data LCRI, LCRN 10	34
Technical data LCR 15	35
Technical data LCRI, LCRN 15	36
Technical data LCR 20	37
Technical data LCRI, LCRN 20	38
Technical data LCR 32	39
Technical data LCRI, LCRN 32	40
Technical data LCR 45	41
Technical data LCRI, LCRN 45	42

INTRODUCTION

This data booklet deals with LCR,LCRI and LCRN pumps.

LCR, LCRI and LCRN pumps are vertical multistage centrifugal pumps. The vertical in-line design enables the pump to be installed in a horizontal plane single system where the suction and discharge connections are in the same horizontal plane and have the same pipe sizes. This design provides a more compact pump design saving space and easy pipework.

SEI LCR pumps come with various sizes and various numbers of stages to provide the flow and the pressure for different site conditions.

LCR pumps are suitable for a wide variety of applications from pumping of potable water to the pumping of chemicals.

LCR pumps are available in various material versions according to the pumped liquid.

APPLICATIONS

For thin, non-explosive, not containing solid particles or fibers, non-corrosive liquids are suitable.

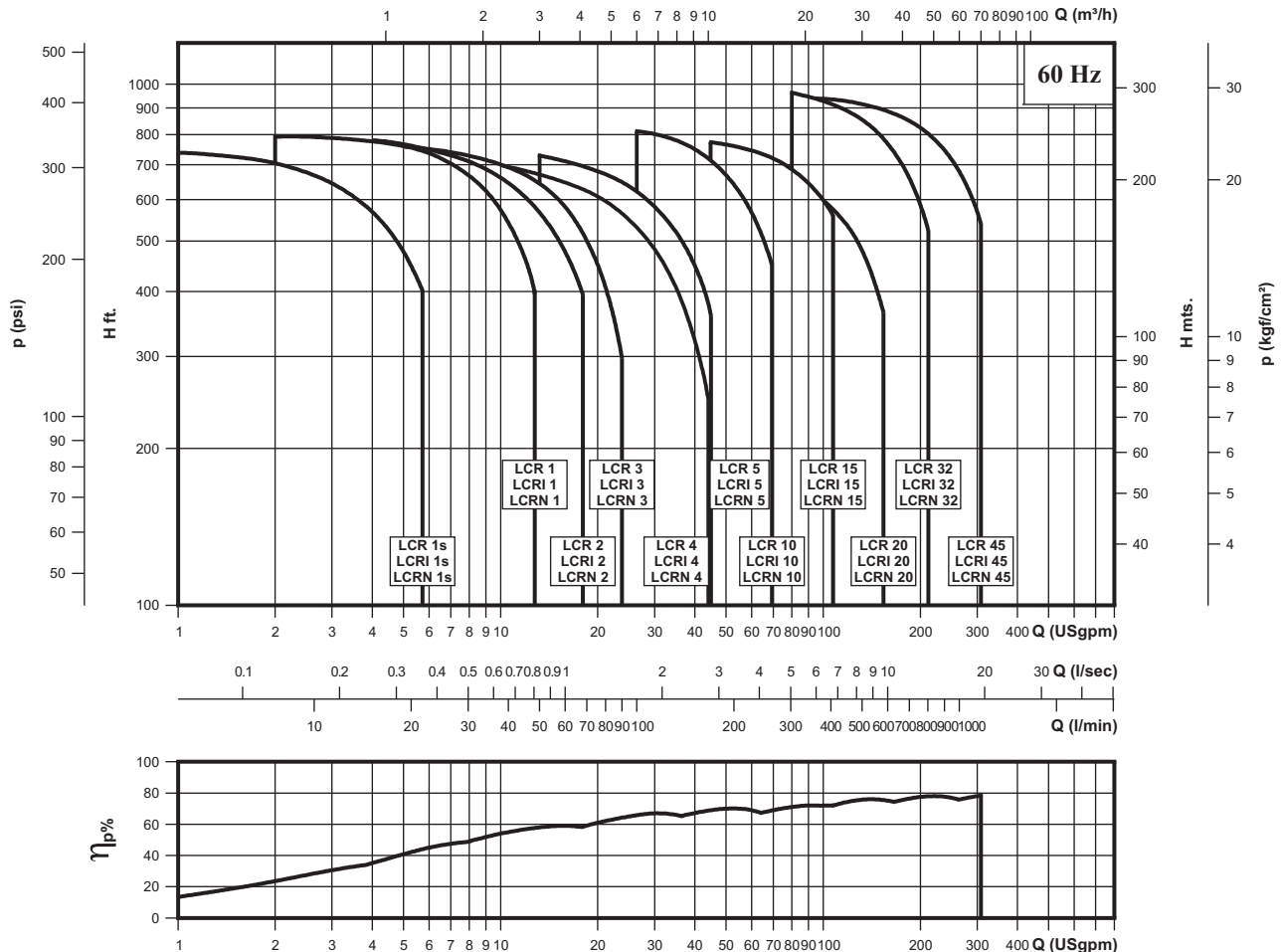
For liquid transfer, circulation and pressure boosting of cold or hot clean water.

For water supply systems, pressure boosting systems, liquid transfer and irrigation works.



FIG. 1 LCR, LCRI AND LCRN PUMPS

PERFORMANCE RANGE - LCR, LCRI, LCRN



PRODUCT RANGE

RANGE	LCR 1s	LCR 1	LCR 2	LCR 3	LCR 4	LCR 5
Nominal flow rate [USgpm]	4.5	8.5	12	16	26.5	30
Temperature range [°F]	-4 to +248	-4 to +248	-4 to +248	-4 to +248	-4 to +248	-4 to +248
Temp. range [°F] - on request	-40 to +356	-40 to +356	-40 to +356	-40 to +356	-40 to +356	-40 to +356
Max. working pressure [psi]	362	362	362	362	362	362
Max. pump efficiency [%]	35	49	47	59	59	67
LCR PUMPS						
Flow range [USgpm]	1.8-5.7	3.5-12.8	4-18	6.2-23.8	10-44	13.2-45
Max. pump pressure (H[ft])	750	793	815	785	742	780
Motor power [HP]	1/3-2	1/3-3	1/2-5	1/3-5	1/2-7 1/2	3/4-7 1/2
VERSION						
LCR:						
Cast iron and Stainless steel AISI 304	●	●	●	●	●	●
LCRI:						
Stainless steel AISI 304	●	●	●	●	●	●
LCRN:						
Stainless steel AISI 316	●	●	●	●	●	●
LCR PIPE CONNECTION						
Oval flange (NPT)	1"	1"	1"	1"	1¼"	1¼"
Oval flange (NPT) - on request	1¼"	1¼"	1¼"	1¼"	1"	1"
ANSI flange size	1¼"	1¼"	1¼"	1¼"	1¼"	1¼"
ANSI flange size - on request	-	-	-	-	-	-
ANSI flange class	250 lb.	250 lb.	250 lb.	250 lb.	250 lb.	250 lb.
LCRI PIPE CONNECTION						
ANSI flange size	1¼"	1¼"	1¼"	1¼"	1¼"	1¼"
ANSI flange size - on request	-	-	-	-	-	-
ANSI flange class	300 lb.	300 lb.	300 lb.	300 lb.	300 lb.	300 lb.
LCRN PIPE CONNECTION						
ANSI flange size	1¼"	1¼"	1¼"	1¼"	1¼"	1¼"
ANSI flange size - on request	-	-	-	-	-	-
ANSI flange class	300 lb.	300 lb.	300 lb.	300 lb.	300 lb.	300 lb.

● Available

PRODUCT RANGE

RANGE	LCR 10	LCR 15	LCR 20	LCR 32	LCR 45
Nominal flow rate [USgpm]	55	95	110	140	220
Temperature range [°F]	-4 to +248	-4 to +248	-4 to +248	-22 to +248	-22 to +248
Temp. range [°F] - on request	-40 to +356	-40 to +356	-40 to +356	-40 to +356	-40 to +356
Max. working pressure [psi]	362	362	362	435	435
Max. pump efficiency [%]	70	72	72	76	78
LCR PUMPS					
Flow range [USgpm]	26.5-69.3	45-125	56-154	79.5-212	115-308
Max. pump pressure (H[ft])	819	800	700	995	943
Motor power [HP]	3/4-15	2-25	3-25	3-40	7 1/2-60
VERSION					
LCR:					
Cast iron and Stainless steel AISI 304	●	●	●	●	●
LCRI:					
Stainless steel AISI 304	●	●	●	●	●
LCRN:					
Stainless steel AISI 316	●	●	●	●	●
LCR PIPE CONNECTION					
Oval flange (NPT)	2"	2"	2"	-	-
Oval flange (NPT) - on request	1½"	-	-	-	-
ANSI flange size	2"	2"	2"	2½"	3"
ANSI flange size - on request	-	-	-	3"	4"
ANSI flange class	250 lb.	250 lb.	250 lb.	125/250 lb.	125/250 lb.
LCRI PIPE CONNECTION					
ANSI flange size	2"	2"	2"	2½"	3"
ANSI flange size - on request	-	-	-	3"	-
ANSI flange class	300 lb.	300 lb.	300 lb.	150/300 lb.	150/300 lb.
LCRN PIPE CONNECTION					
ANSI flange size	2"	2"	2"	2½"	3"
ANSI flange size - on request	-	-	-	3"	-
ANSI flange class	300 lb.	300 lb.	300 lb.	150/300 lb.	150/300 lb.

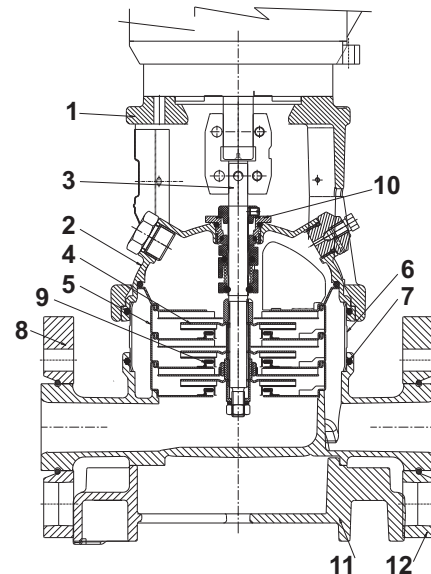
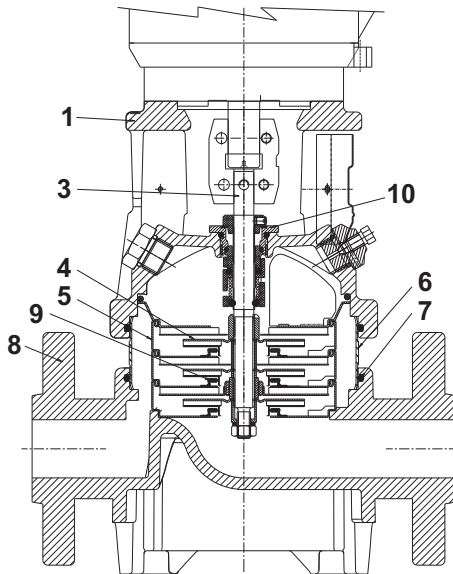
● Available

LCR 1s, 1, 2, 3, 4, 5, 10, 15 AND 20

LCRI, LCRN 1s, 1, 2, 3, 4, 5, 10, 15 AND 20

SECTIONAL DRAWING

SECTIONAL DRAWING



MATERIALS: LCR

MATERIALS: LCRI, LCRN

POS.	DESIGNATION	MATERIALS	AISI/ASTM
1	Pump head	Cast iron	A 48-30 B
3	Shaft	Stainless steel	AISI 316 AISI 431
4	Impeller	Stainless steel	AISI 304
5	Chamber	Stainless steel	AISI 304
6	Outer sleeve	Stainless steel	AISI 304
7	O-ring for outer sleeve	EPDM or FKM	
8	Base	Cast iron	A 48-30 B
9	Neck ring	PTFE	
10	Shaft seal	Bellow type	
	Bearing rings	Silicon carbide	
	Rubber parts	EPDM or FKM	

POS.	DESIGNATION	MATERIALS	AISI/ASTM
1	Pump head	Cast iron	A 48-30 B
3	Shaft	Stainless steel	AISI 316 AISI 329
7	O-ring for outer sleeve	EPDM or FKM	
9	Neck ring	PTFE	
10	Shaft seal	Bellow type	
11	Base plate	Cast iron	A 48-30 B
12	FGJ flange ring	Ductile iron	A 65-45-12
	Bearing rings	Silicon carbide	
	Rubber parts	EPDM or FKM	

LCRI

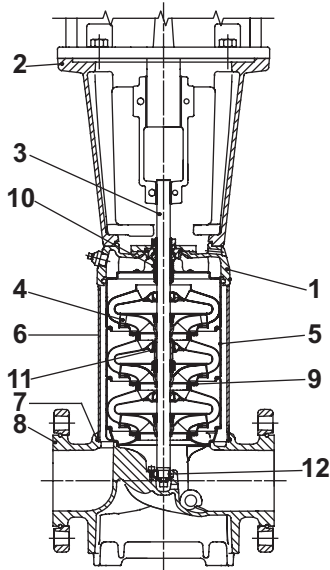
2	Pump head cover	Stainless steel	CF 8 eq. to AISI 304
4	Impeller	Stainless steel	AISI 304
5	Chamber	Stainless steel	AISI 304
6	Outer sleeve	Stainless steel	AISI 304
8	Base	Stainless steel	CF 8 eq. to AISI 304

LCRN

2	Pump head cover	Stainless steel	CF 8M eq. to AISI 316
4	Impeller	Stainless steel	AISI 316
5	Chamber	Stainless steel	AISI 316
6	Outer sleeve	Stainless steel	AISI 316
8	Base	Stainless steel	CF 8M eq. to AISI 316

LCR 32 AND 45

SECTIONAL DRAWING

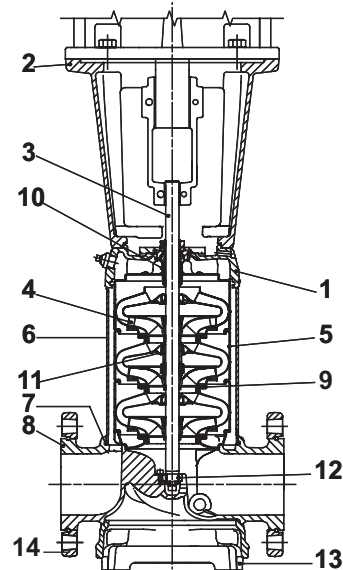


MATERIALS: LCR

POS.	DESIGNATION	MATERIALS	AISI/ASTM
1	Pump head	Ductile iron	A 65-45-12
2	Motor stool	Cast iron	A 48-30 B
3	Shaft	Stainless steel	AISI 431
4	Impeller	Stainless steel	AISI 304
5	Chamber	Stainless steel	AISI 304
6	Outer sleeve	Stainless steel	AISI 304
7	O ring for outer sleeve	EPDM or FKM	
8	Base	Ductile iron	A 65- 45-12
9	Neck ring	Carbon-graphite filled PTFE	
10	Shaft seal	Bellow type	
11	Bearing ring	Bronze	
12	Bottom bearing ring	Sic/Sic	
	Rubber parts	EPDM or FKM	

LCRI, LCRN 32 AND 45

SECTIONAL DRAWING



MATERIALS: LCRI, LCRN

POS.	DESIGNATION	MATERIALS	AISI/ASTM
2	Motor stool	Cast iron	A 48-30 B
3	Shaft	Stainless steel	SAF 2205
7	O-ring for outer sleeve	EPDM or FKM	
9	Neck ring	Carbon-graphite filled PTFE	
10	Shaft seal	Bellow type	
11	Bearing ring	Carbon-graphite filled PTFE	
12	Bottom bearing ring	Sic/Sic	
13	Base plate	Ductile iron	A 65-45-12
14	Flange ring	Ductile iron	A 65-45-12
	Rubber parts	EPDM or FKM	

LCRI

1	Pump head	Stainless steel	CF 8 eq. to AISI 304
4	Impeller	Stainless steel	AISI 304
5	Chamber	Stainless steel	AISI 304
6	Outer sleeve	Stainless steel	AISI 304
8	Base	Stainless steel	CF 8 eq. to AISI 304

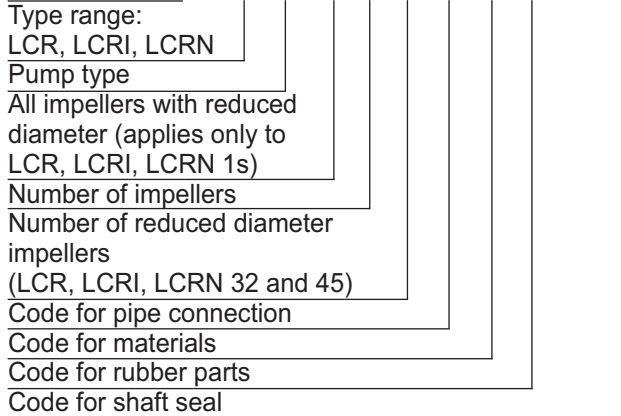
LCRN

1	Pump head	Stainless steel	CF 8M eq. to AISI 316
4	Impeller	Stainless steel	AISI 316
5	Chamber	Stainless steel	AISI 316
6	Outer sleeve	Stainless steel	AISI 316
8	Base	Stainless steel	CF 8M eq. to AISI 316

TYPE KEYS

LCR, LCRI, LCRN

Example LCR 32 (s) -4 -2 -G -G -E -BBQV



CODES

Example -G -A -E -B BQ V

PIPE CONNECTION

- A Oval flange
- B NPT thread
- F DIN flange
- G ANSI flange
- J JIS flange
- N Change diameter of ports

MATERIALS

- A Basic version
- D Carbon-graphite filled PTFE (bearings)
- G Wetted parts AISI 316
All parts stainless steel
- K Bronze (bearings)
- X Special version

CODE FOR RUBBER PARTS

- E EPDM
- V FKM

SHAFT SEAL

- B Bellow type seal*
- H Balanced cartridge seal
- Q Silicon carbide*
- U Tungsten carbide
- B Carbon*
- E EPDM
- V FKM*

* Standard construction.

TEFC MOTORS (TOTALLY ENCLOSED FAN COOLED), STANDARD EFFICIENCY

RATED OUTPUT		PH	FULL LOAD SPEED [RPM]	FRAME SIZE	INSUL. CLASS	SERVICE FACTOR S.F	FULL LOAD CURRENT IN [A] AT			START CURRENT IN [A] AT			MOTOR EFFICIENCY [%]
P2 [HP]	P2 [kW]						115 V	208 V	230 V	115 V	208 V	230 V	
1/3	0.25	1	3450	56C	B	1.15	8.00	3.50	4.00	40.0	17.5	20.0	51.0
1/2	0.37	1	3450	56C	B	1.15	8.60	4.00	4.30	43.0	20.0	21.5	61.0
3/4	0.55	1	3450	56C	B	1.15	10.7	5.20	5.30	53.5	26.0	26.5	65.0
1	0.75	1	3450	56C	B	1.15	12.2	6.30	6.10	61.0	31.5	30.5	72.0
1 1/2	1.10	1	3450	56C	B	1.15	13.5	7.60	6.70	67.5	38.0	33.5	77.0
2	1.50	1	3450	56C	F	1.20	16.6	9.40	8.30	83.0	47.0	41.5	79.0
3	2.20	1	3450	56C	F	1.00	-	-	12.5	-	-	62.5	77.0

TEFC MOTORS (TOTALLY ENCLOSED FAN COOLED), STANDARD EFFICIENCY

RATED OUTPUT		PH	FULL LOAD SPEED [RPM]	FRAME SIZE	INSUL. CLASS	SERVICE FACTOR S.F	FULL LOAD CURRENT IN [A] AT			START CURRENT IN [A] AT			MOTOR EFFICIENCY [%]
P2 [HP]	P2 [kW]						208 V	230 V	460 V	208 V	230 V	460 V	
1/2	0.37	3	3450	56C	B	1.15	1.70	1.60	0.80	8.50	8.00	4.00	70.0
3/4	0.55	3	3450	56C	B	1.15	2.50	2.40	1.20	12.5	12.0	6.00	72.0
1	0.75	3	3450	56C	B	1.15	3.30	3.20	1.60	16.5	16.0	8.00	75.0
1 1/2	1.10	3	3450	56C	B	1.15	4.50	4.60	2.30	22.5	23.0	11.5	78.0
2	1.50	3	3450	56C	F	1.20	6.00	5.80	2.90	30.0	29.0	14.5	79.0
3	2.20	3	3450	56C	F	1.15	8.30	7.60	3.80	41.5	38.0	19.0	82.0

TEFC MOTORS (TOTALLY ENCLOSED FAN COOLED), HIGH EFFICIENCY

RATED OUTPUT		PH	FULL LOAD SPEED [RPM]	FRAME SIZE	INSUL. CLASS	SERVICE FACTOR S.F	FULL LOAD CURRENT IN [A] AT			START CURRENT IN [A] AT			MOTOR EFFICIENCY [%]
P2 [HP]	P2 [kW]						208 V	230 V	460 V	208 V	230 V	460 V	
5	3.70	3	3480	184TC	F	1.15	13.5	11.8	5.90	67.5	59.0	29.5	87.5
7 1/2	5.50	3	3460	184TC	F	1.15	19.2	17.5	8.76	96.0	87.5	43.8	88.5
10	7.50	3	3500	215TC	F	1.15	25.9	23.4	11.7	130	117	58.5	89.5
15	11.0	3	3500	254TC	F	1.15	37.6	34.5	17.3	188	173	86.5	90.2
20	15.0	3	3520	256TC	F	1.15	51.5	46.5	23.3	258	233	117	90.2
25	18.5	3	3525	284TSC	F	1.15	-	58.0	29.0	-	290	145	91.0
30	22.0	3	3520	286TSC	F	1.15	-	67.5	33.8	-	338	169	91.0
40	30.0	3	3550	324TSC	F	1.15	-	92.3	46.1	-	462	231	91.7
50	37.0	3	3555	326TSC	F	1.15	-	113	56.5	-	565	283	92.4
60	45.0	3	3555	364TSC	F	1.15	-	138	69.0	-	690	345	93.0

ODP MOTORS (OPEN DRIP PROOF), STANDARD EFFICIENCY

RATED OUTPUT		PH	FULL LOAD SPEED [RPM]	FRAME SIZE	INSUL. CLASS	SERVICE FACTOR S.F	FULL LOAD CURRENT IN [A] AT			START CURRENT IN [A] AT			MOTOR EFFICIENCY [%]
P2 [HP]	P2 [kW]						115 V	208 V	230 V	115 V	208 V	230 V	
1/3	0.25	1	3450	56C	B	1.75	7.50	-	3.80	37.5	-	19.0	50.0
1/2	0.37	1	3450	56C	B	1.60	8.40	-	4.80	42.0	-	24.0	55.0
3/4	0.55	1	3450	56C	B	1.50	11.3	-	5.60	56.5	-	28.0	61.0
1	0.75	1	3450	56C	B	1.40	14.4	-	7.20	72.0	-	36.0	62.0
1 1/2	1.10	1	3450	56C	B	1.30	17.0	9.00	8.50	85.0	45.0	42.5	75.0
2	1.50	1	3450	56C	B	1.20	21.0	11.0	10.5	105	55.0	52.5	76.0

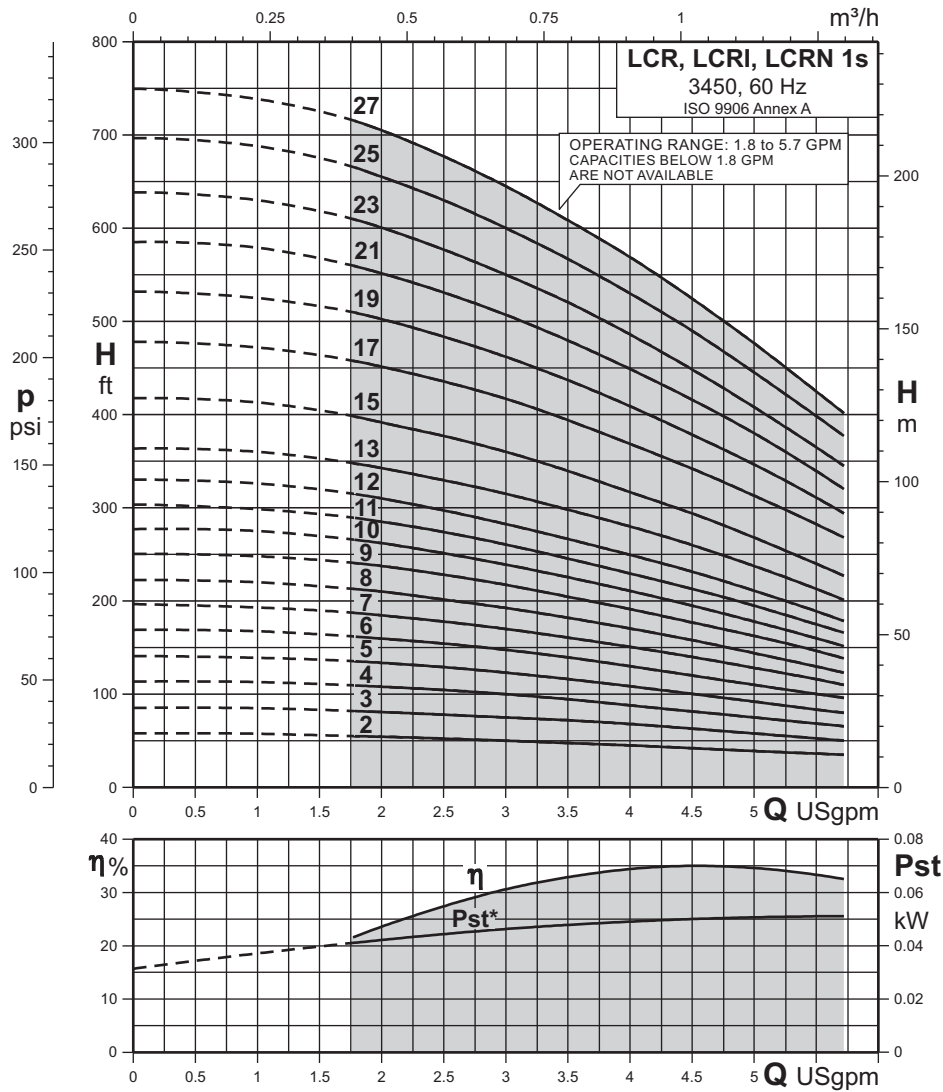
ODP MOTORS (OPEN DRIP PROOF), STANDARD EFFICIENCY

RATED OUTPUT		PH	FULL LOAD SPEED [RPM]	FRAME SIZE	INSUL. CLASS	SERVICE FACTOR S.F	FULL LOAD CURRENT IN [A] AT			START CURRENT IN [A] AT			MOTOR EFFICIENCY [%]
P2 [HP]	P2 [kW]						208 V	230 V	460 V	208 V	230 V	460 V	
1/3	0.25	3	3450	56C	B	1.75	1.50	1.40	0.70	7.50	7.00	3.50	62.0
1/2	0.37	3	3450	56C	B	1.60	1.80	1.70	0.90	9.00	8.50	4.50	70.0
3/4	0.55	3	3450	56C	B	1.50	2.70	2.50	1.20	13.5	12.5	6.00	77.0
1	0.75	3	3450	56C	B	1.40	3.70	3.20	1.60	18.5	16.0	8.00	79.0
1 1/2	1.10	3	3450	56C	B	1.30	4.40	3.90	2.00	22.0	19.5	10.0	79.0
2	1.50	3	3450	56C	B	1.20	5.90	5.20	2.50	29.5	26.0	12.5	76.0

PERFORMANCE CURVES

4.5 GPM

LCR, LCRI, LCRN 1s

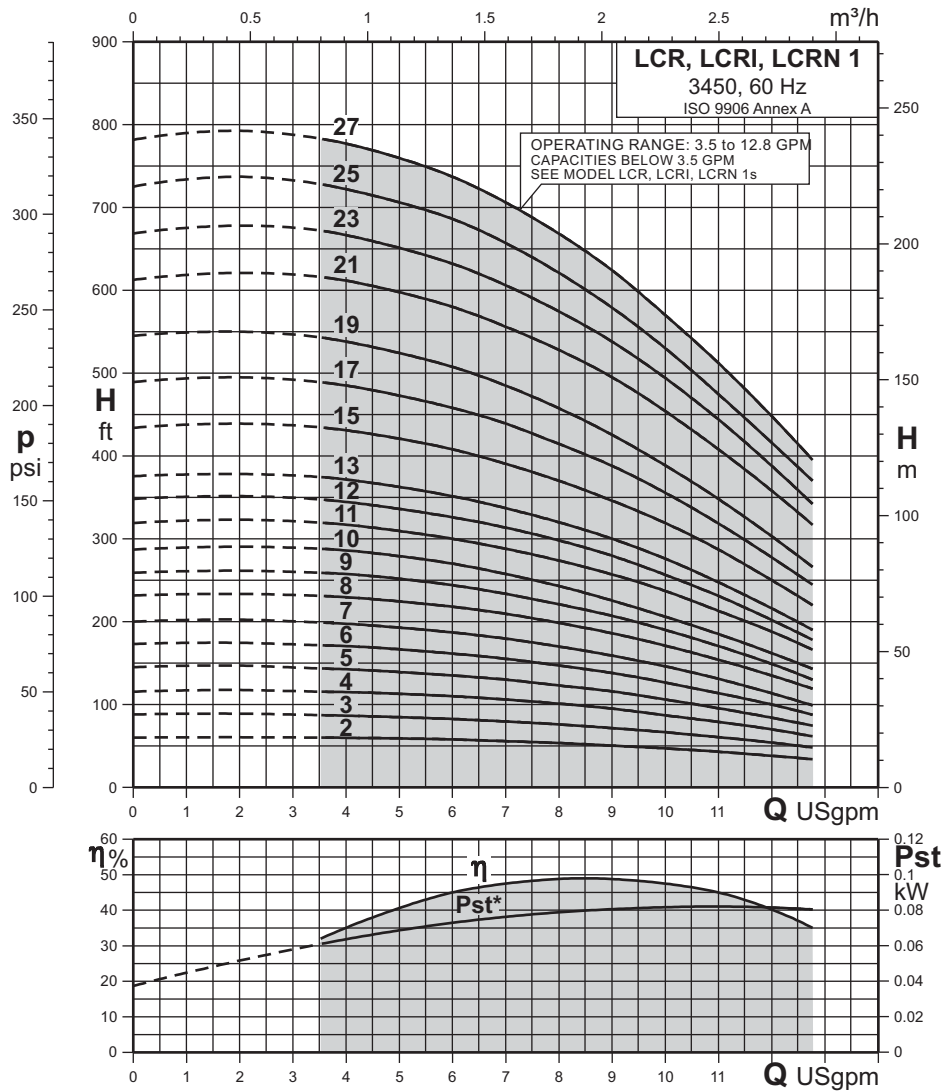


* Pst = Power with reference to one stage.

PERFORMANCE CHART

PUMP TYPE	HP	kW	Q l/min USgpm	n = 3450 rpm									
				7.6	9.5	11.4	13.2	15.1	17.0	18.9	20.8	21.6	
				2	2.5	3	3.5	4	4.5	5	5.5	5.7	
LCR, LCRI, LCRN 1s/2	1/3	0.25	H ft.	54	52	50	48	45	42	39	36	35	
LCR, LCRI, LCRN 1s/3	1/3	0.25		81	78	75	72	68	63	58	53	50	
LCR, LCRI, LCRN 1s/4	1/3	0.25		108	105	100	95	88	82	75	69	66	
LCR, LCRI, LCRN 1s/5	1/3	0.25		134	129	123	116	109	100	92	84	80	
LCR, LCRI, LCRN 1s/6	1/2	0.37		160	154	148	140	130	120	110	100	96	
LCR, LCRI, LCRN 1s/7	1/2	0.37		185	178	170	161	151	140	128	116	110	
LCR, LCRI, LCRN 1s/8	1/2	0.37		210	202	193	182	171	158	144	130	123	
LCR, LCRI, LCRN 1s/9	3/4	0.55		238	228	217	205	191	177	163	147	139	
LCR, LCRI, LCRN 1s/10	3/4	0.55		262	251	239	226	211	195	178	160	152	
LCR, LCRI, LCRN 1s/11	3/4	0.55		285	274	261	246	230	213	195	175	166	
LCR, LCRI, LCRN 1s/12	3/4	0.55		310	297	283	267	250	232	211	189	179	
LCR, LCRI, LCRN 1s/13	1	0.75		343	330	315	298	280	260	238	213	201	
LCR, LCRI, LCRN 1s/15	1	0.75		392	377	360	340	317	294	268	240	227	
LCR, LCRI, LCRN 1s/17	1 1/2	1.10		451	436	417	394	369	342	313	283	268	
LCR, LCRI, LCRN 1s/19	1 1/2	1.10		502	484	462	437	409	379	347	311	294	
LCR, LCRI, LCRN 1s/21	1 1/2	1.10		552	531	507	480	449	416	380	340	320	
LCR, LCRI, LCRN 1s/23	1 1/2	1.10		601	577	550	521	486	449	408	365	345	
LCR, LCRI, LCRN 1s/25	2	1.50		655	630	600	567	530	490	445	399	377	
LCR, LCRI, LCRN 1s/27	2	1.50		705	677	645	609	569	525	477	425	402	

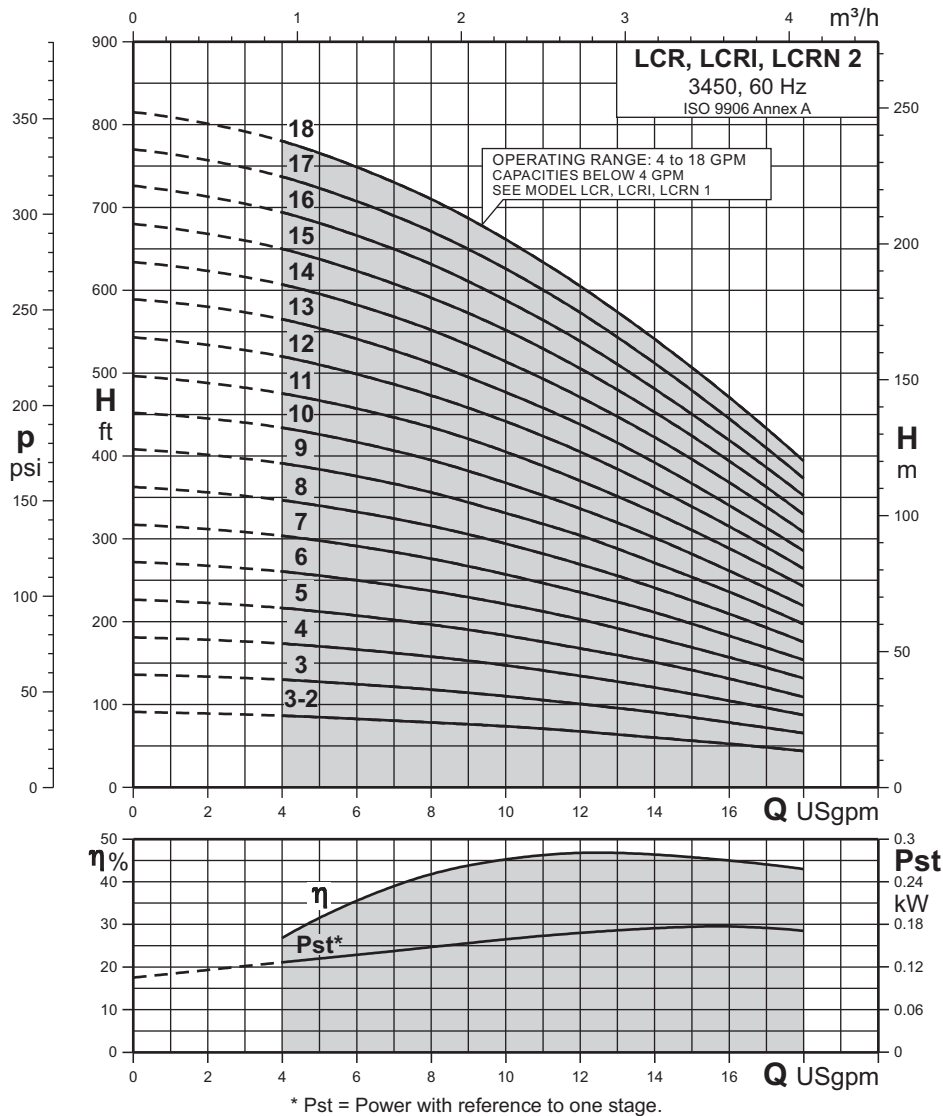




* Pst = Power with reference to one stage.

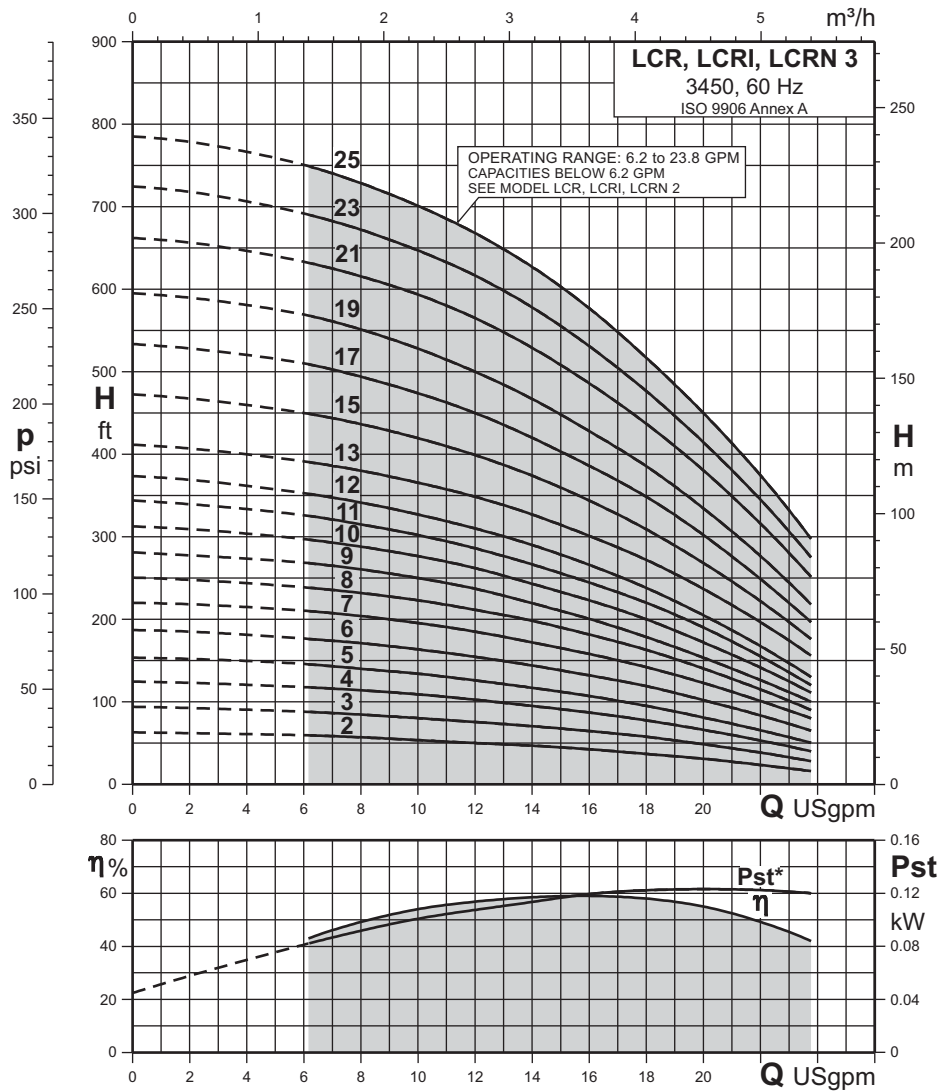
PERFORMANCE CHART

PUMP TYPE	HP	kW	Q l/min USgpm	n = 3450 rpm											
				15.1	22.7	26.5	30.3	34.1	37.9	41.6	45.4	48.5			
				4	6	7	8	9	10	11	12	12.8			
LCR, LCRI, LCRN 1/2	1/3	0.25	H ft.	60	58	56	54	50	47	43	38	34			
LCR, LCRI, LCRN 1/3	1/3	0.25		87	83	80	76	72	67	61	54	48			
LCR, LCRI, LCRN 1/4	1/2	0.37		115	110	106	101	95	87	79	70	62			
LCR, LCRI, LCRN 1/5	1/2	0.37		143	135	130	123	116	106	96	84	75			
LCR, LCRI, LCRN 1/6	3/4	0.55		171	162	155	147	138	127	114	100	88			
LCR, LCRI, LCRN 1/7	3/4	0.55		198	187	180	170	159	146	131	114	99			
LCR, LCRI, LCRN 1/8	1	0.75		230	218	210	199	186	171	154	135	119			
LCR, LCRI, LCRN 1/9	1	0.75		258	244	234	221	207	190	171	149	130			
LCR, LCRI, LCRN 1/10	1	0.75		286	270	258	243	226	206	185	162	143			
LCR, LCRI, LCRN 1/11	1 1/2	1.10		317	300	288	274	257	237	213	188	166			
LCR, LCRI, LCRN 1/12	1 1/2	1.10		345	326	314	298	280	257	231	202	178			
LCR, LCRI, LCRN 1/13	1 1/2	1.10		372	352	337	320	300	276	248	216	190			
LCR, LCRI, LCRN 1/15	2	1.50		431	408	391	370	346	319	287	250	220			
LCR, LCRI, LCRN 1/17	2	1.50		485	458	439	415	388	356	319	278	245			
LCR, LCRI, LCRN 1/19	2	1.50		538	508	485	458	426	389	348	303	266			
LCR, LCRI, LCRN 1/21	3	2.20		612	580	556	528	495	454	408	358	317			
LCR, LCRI, LCRN 1/23	3	2.20		667	632	606	575	538	494	444	388	342			
LCR, LCRI, LCRN 1/25	3	2.20		722	686	657	621	579	530	475	416	370			
LCR, LCRI, LCRN 1/27	3	2.20		777	737	706	668	624	570	512	448	395			



PERFORMANCE CHART

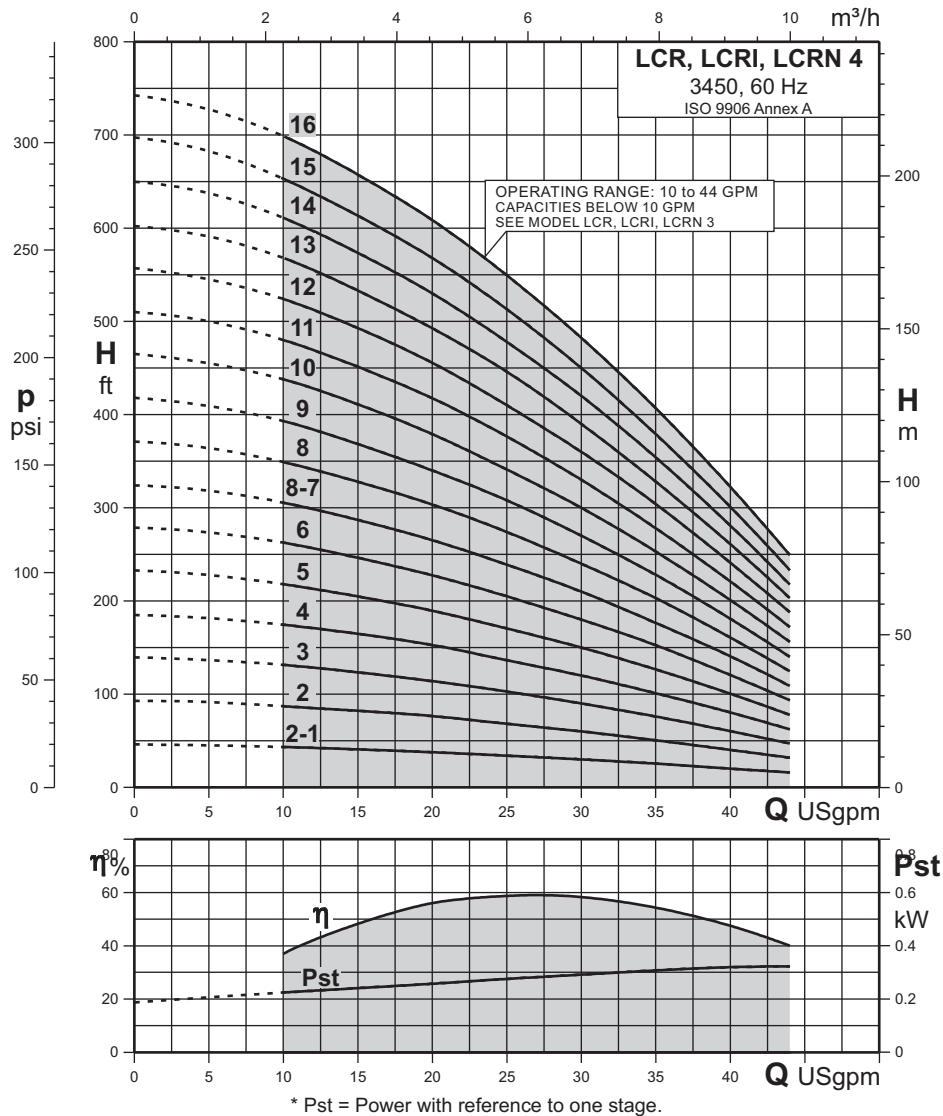
PUMP TYPE	HP	kW	Q l/min USgpm	n = 3450 rpm							
				15.1	22.7	30.3	37.9	45.4	53	60.6	68.1
				4	6	8	10	12	14	16	18
LCR, LCRI, LCRN 2/3-2	1/2	0.37	H ft.	87	82	78	74	68	60	53	44
LCR, LCRI, LCRN 2/3	3/4	0.55		130	125	118	110	101	91	78	66
LCR, LCRI, LCRN 2/4	1	0.75		174	167	158	147	135	121	105	87
LCR, LCRI, LCRN 2/5	1 1/2	1.10		217	207	197	183	168	151	131	109
LCR, LCRI, LCRN 2/6	1 1/2	1.10		261	250	237	221	203	181	157	132
LCR, LCRI, LCRN 2/7	2	1.50		304	290	276	257	236	211	183	154
LCR, LCRI, LCRN 2/8	2	1.50		347	332	316	294	269	241	210	176
LCR, LCRI, LCRN 2/9	3	2.20		391	375	356	331	304	271	236	197
LCR, LCRI, LCRN 2/10	3	2.20		434	415	395	368	337	301	261	219
LCR, LCRI, LCRN 2/11	3	2.20		476	457	435	405	370	332	289	243
LCR, LCRI, LCRN 2/12	3	2.20		520	499	473	442	405	362	315	264
LCR, LCRI, LCRN 2/13	3	2.20		565	540	512	477	438	392	340	285
LCR, LCRI, LCRN 2/14	5	3.70		607	582	552	514	471	423	368	308
LCR, LCRI, LCRN 2/15	5	3.70		650	624	591	552	506	453	394	329
LCR, LCRI, LCRN 2/16	5	3.70		694	665	632	588	539	481	419	352
LCR, LCRI, LCRN 2/17	5	3.70		737	708	671	626	573	512	445	373
LCR, LCRI, LCRN 2/18	5	3.70		780	749	710	662	605	541	471	394



* Pst = Power with reference to one stage.

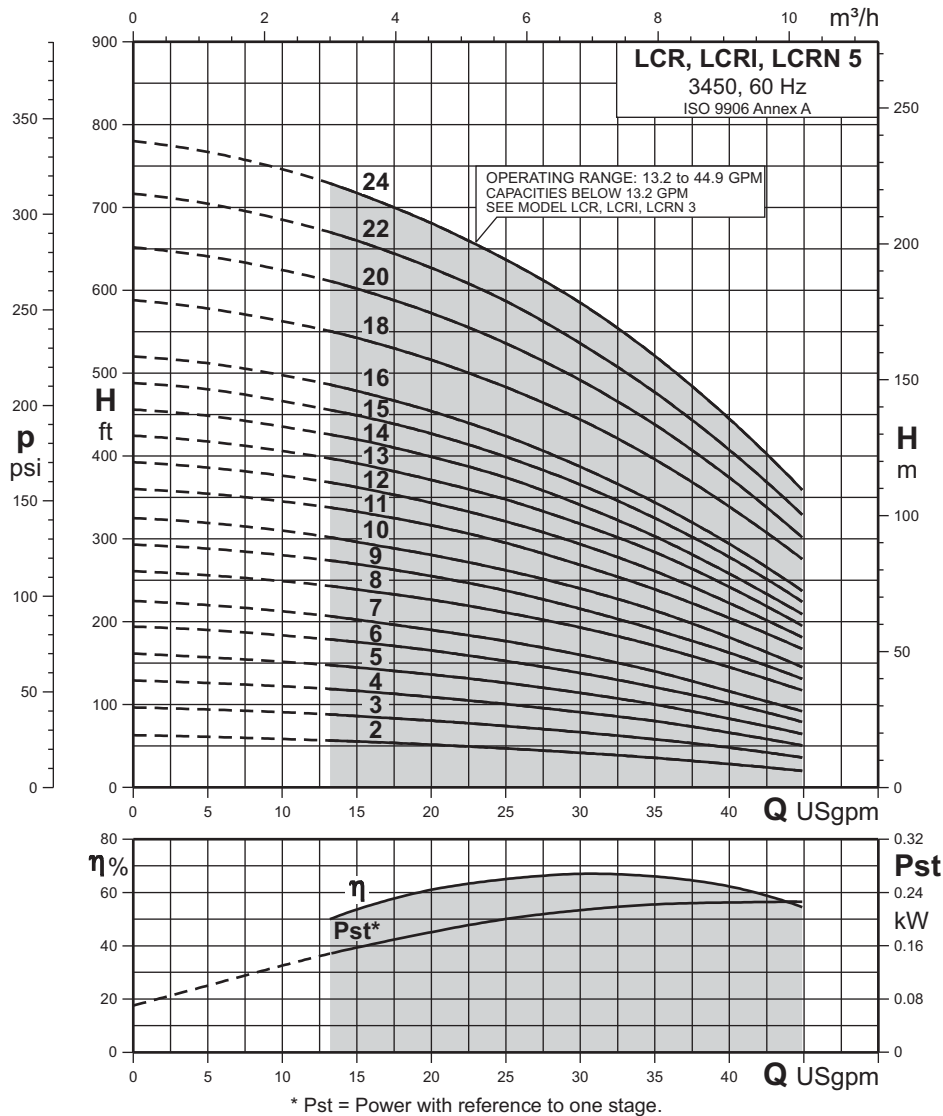
PERFORMANCE CHART

PUMP TYPE	HP	kW	Q l/min USgpm	n = 3450 rpm										
				30.3	37.9	45.4	53	60.6	68.1	75.7	83.3	90.1		
				8	10	12	14	16	18	20	22	23.8		
LCR, LCRI, LCRN 3/2	1/3	0.25	H ft.	57	54	50	47	43	37	31	24	16		
LCR, LCRI, LCRN 3/3	1/2	0.37		85	80	76	71	65	58	49	39	28		
LCR, LCRI, LCRN 3/4	3/4	0.55		114	109	103	95	87	78	66	53	40		
LCR, LCRI, LCRN 3/5	3/4	0.55		140	134	126	117	107	95	81	66	50		
LCR, LCRI, LCRN 3/6	1	0.75		171	164	155	144	132	119	102	84	65		
LCR, LCRI, LCRN 3/7	1 1/2	1.10		204	196	185	172	158	142	123	101	80		
LCR, LCRI, LCRN 3/8	1 1/2	1.10		232	223	212	198	182	163	140	115	90		
LCR, LCRI, LCRN 3/9	1 1/2	1.10		261	250	237	220	201	179	154	126	100		
LCR, LCRI, LCRN 3/10	2	1.50		288	277	262	243	223	200	172	142	111		
LCR, LCRI, LCRN 3/11	2	1.50		315	302	286	267	245	220	190	155	120		
LCR, LCRI, LCRN 3/12	2	1.50		342	327	310	290	266	238	205	168	130		
LCR, LCRI, LCRN 3/13	3	2.20		380	366	349	327	301	272	237	197	156		
LCR, LCRI, LCRN 3/15	3	2.20		437	420	399	374	344	309	268	222	176		
LCR, LCRI, LCRN 3/17	3	2.20		494	474	450	420	386	349	302	249	197		
LCR, LCRI, LCRN 3/19	3	2.20		551	528	500	467	428	386	335	277	218		
LCR, LCRI, LCRN 3/21	5	3.70		616	594	565	529	486	437	381	316	252		
LCR, LCRI, LCRN 3/23	5	3.70		672	647	617	578	531	477	415	345	275		
LCR, LCRI, LCRN 3/25	5	3.70		729	701	668	627	577	517	450	375	298		



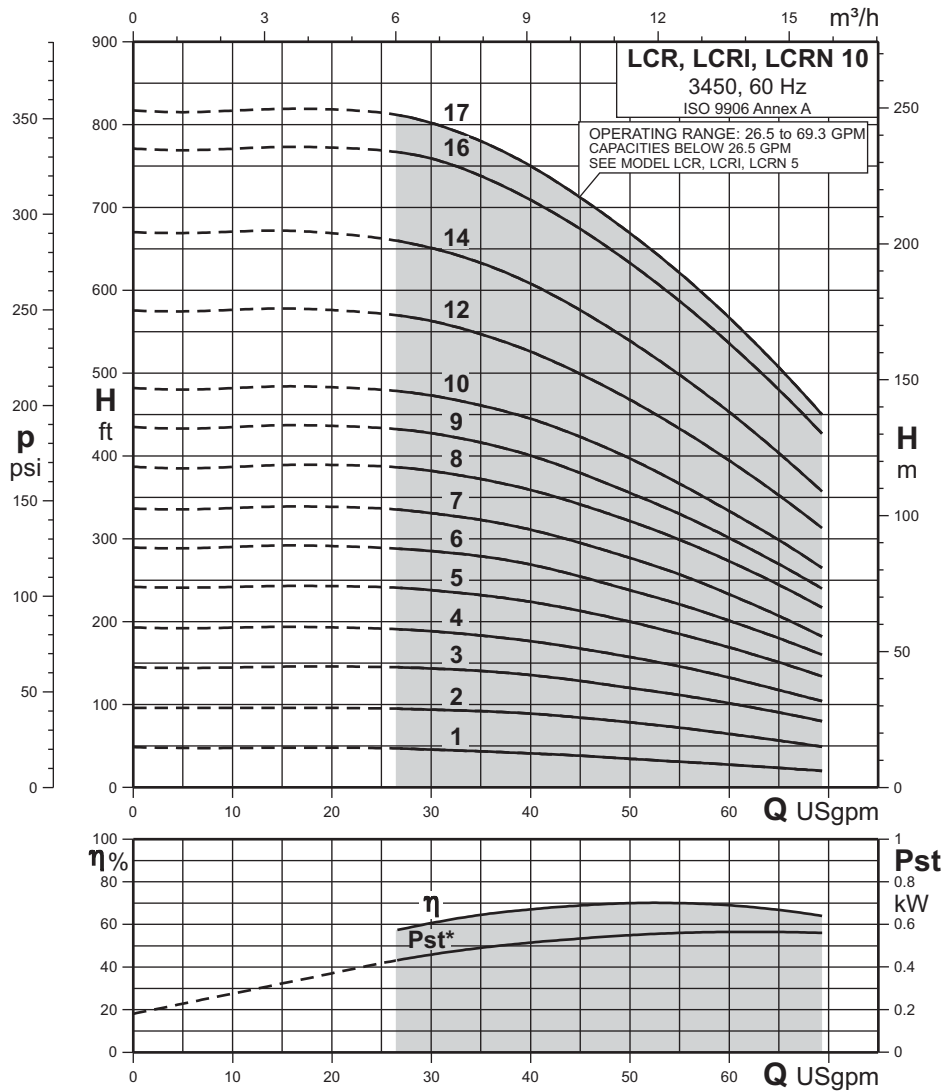
PERFORMANCE CHART

PUMP TYPE	HP	kW	Q l/min USgpm	n = 3450 rpm								
				37.9	56.8	75.7	74.6	113.6	132.5	151.4	166.6	
				10	15	20	25	30	35	40	44	
LCR, LCRI, LCRN 4 - 2-1	1/2	0.37	H ft.	43	41	38	34	30	26	20	16	
LCR, LCRI, LCRN 4 - 2	3/4	0.55		87	83	77	68	60	51	40	32	
LCR, LCRI, LCRN 4 - 3	1 1/2	1.10		131	123	114	103	90	76	60	47	
LCR, LCRI, LCRN 4 - 4	1 1/2	1.10		175	165	153	137	120	101	80	62	
LCR, LCRI, LCRN 4 - 5	2	1.50		218	205	190	171	150	127	101	78	
LCR, LCRI, LCRN 4 - 6	3	2.20		263	246	228	205	180	153	121	94	
LCR, LCRI, LCRN 4 - 8-7	3	2.20		306	287	265	239	210	177	141	109	
LCR, LCRI, LCRN 4 - 8	3	2.20		349	328	304	274	240	203	161	125	
LCR, LCRI, LCRN 4 - 9	5	3.70		393	369	340	308	270	228	181	140	
LCR, LCRI, LCRN 4 - 10	5	3.70		438	412	379	341	300	253	201	156	
LCR, LCRI, LCRN 4 - 11	5	3.70		480	451	418	377	330	278	221	172	
LCR, LCRI, LCRN 4 - 12	5	3.70		524	494	456	410	360	304	241	188	
LCR, LCRI, LCRN 4 - 13	5	3.70		568	532	493	446	390	328	261	203	
LCR, LCRI, LCRN 4 - 14	5	3.70		611	573	530	478	420	354	281	218	
LCR, LCRI, LCRN 4 - 15	7 1/2	5.50		653	614	568	513	450	379	301	233	
LCR, LCRI, LCRN 4 - 16	7 1/2	5.50		699	657	609	550	482	407	323	249	



PERFORMANCE CHART

PUMP TYPE	HP	kW	Q l/min USgpm	n = 3450 rpm						
				56.8	75.7	94.6	113.6	132.5	151.4	170.3
				15	20	25	30	35	40	45
LCR, LCRI, LCRN 5/2	3/4	0.55	H ft.	55	52	47	42	36	28	20
LCR, LCRI, LCRN 5/3	1	0.75		86	81	74	67	58	48	36
LCR, LCRI, LCRN 5/4	1 1/2	1.10		117	109	101	91	80	66	51
LCR, LCRI, LCRN 5/5	1 1/2	1.10		145	136	126	114	100	83	65
LCR, LCRI, LCRN 5/6	2	1.50		176	165	153	138	121	102	79
LCR, LCRI, LCRN 5/7	2	1.50		203	190	177	160	140	116	92
LCR, LCRI, LCRN 5/8	3	2.20		239	227	211	193	171	145	117
LCR, LCRI, LCRN 5/9	3	2.20		270	255	238	216	191	163	131
LCR, LCRI, LCRN 5/10	3	2.20		296	281	262	240	214	181	145
LCR, LCRI, LCRN 5/11	5	3.70		333	316	295	269	239	205	167
LCR, LCRI, LCRN 5/12	5	3.70		362	344	321	294	261	223	181
LCR, LCRI, LCRN 5/13	5	3.70		391	371	348	318	284	242	195
LCR, LCRI, LCRN 5/14	5	3.70		420	399	374	341	303	258	209
LCR, LCRI, LCRN 5/15	5	3.70		449	427	399	366	325	278	224
LCR, LCRI, LCRN 5/16	5	3.70		479	454	424	387	344	294	237
LCR, LCRI, LCRN 5/18	7 1/2	5.50		543	516	483	444	396	339	276
LCR, LCRI, LCRN 5/20	7 1/2	5.50		602	573	536	492	438	374	302
LCR, LCRI, LCRN 5/22	7 1/2	5.50		660	627	587	536	477	408	329
LCR, LCRI, LCRN 5/24	7 1/2	5.50		718	681	637	585	521	445	359

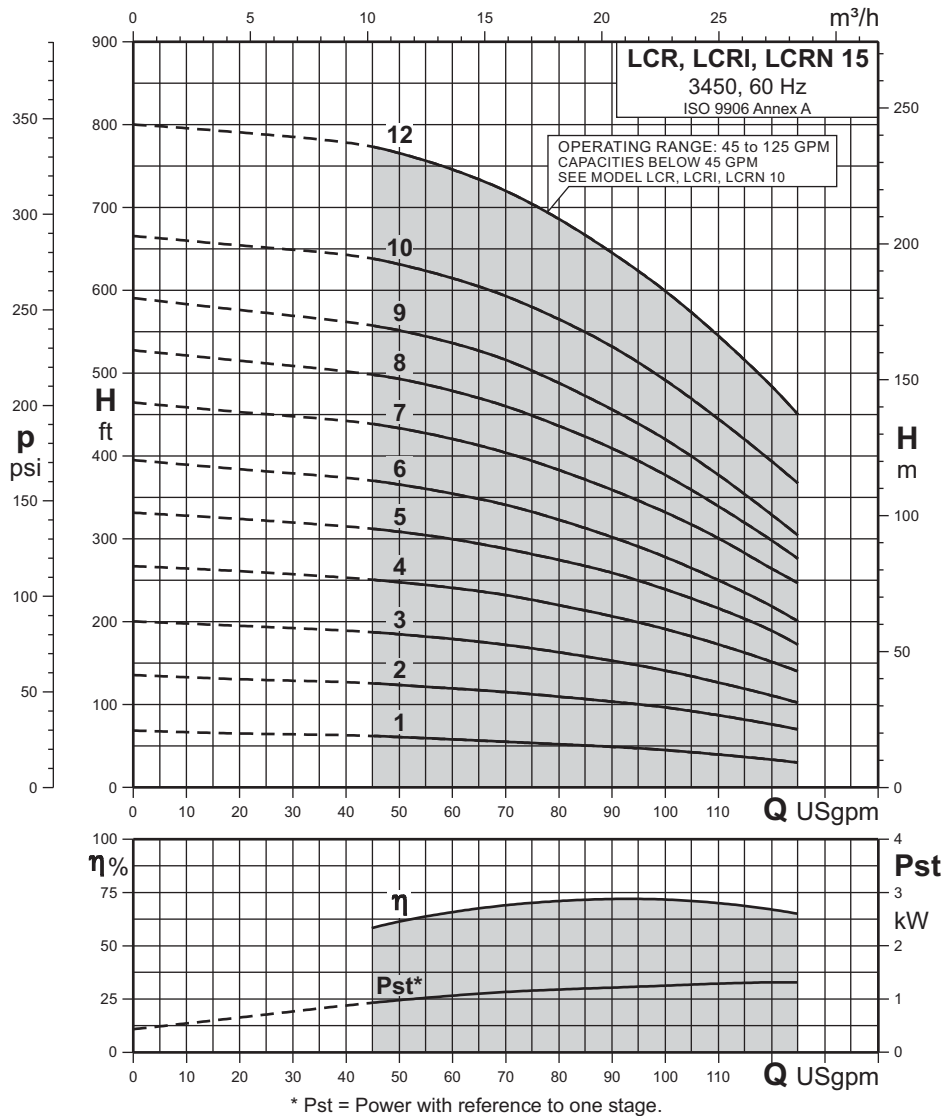


* Pst = Power with reference to one stage.

PERFORMANCE CHART

PUMP TYPE	HP	kW	Q l/min USgpm	n = 3450 rpm								
				113.6	151.4	170.3	189.3	208.2	227.1	246.1	262.3	
				30	40	45	50	55	60	65	69.3	
LCR, LCRI, LCRN 10/1	3/4	0.55	H ft.	46	41	38	35	31	28	24	20	
LCR, LCRI, LCRN 10/2	1 1/2	1.10		94	89	84	79	72	65	57	49	
LCR, LCRI, LCRN 10/3	3	2.20		144	136	129	120	112	102	91	80	
LCR, LCRI, LCRN 10/4	3	2.20		189	177	168	157	146	133	118	104	
LCR, LCRI, LCRN 10/5	5	3.70		238	224	213	200	185	169	151	134	
LCR, LCRI, LCRN 10/6	5	3.70		285	269	255	238	221	201	180	160	
LCR, LCRI, LCRN 10/7	5	3.70		331	311	295	277	257	233	207	182	
LCR, LCRI, LCRN 10/8	7 1/2	5.50		382	359	342	322	299	273	245	217	
LCR, LCRI, LCRN 10/9	7 1/2	5.50		428	401	380	356	330	301	270	240	
LCR, LCRI, LCRN 10/10	7 1/2	5.50		473	445	423	397	367	334	299	265	
LCR, LCRI, LCRN 10/12	10	7.50		563	526	499	468	433	395	353	313	
LCR, LCRI, LCRN 10/14	10	7.50		651	608	576	539	498	453	404	357	
LCR, LCRI, LCRN 10/16	15	11.0		759	709	674	633	587	536	480	427	
LCR, LCRI, LCRN 10/17	15	11.0		802	750	712	669	621	567	507	450	





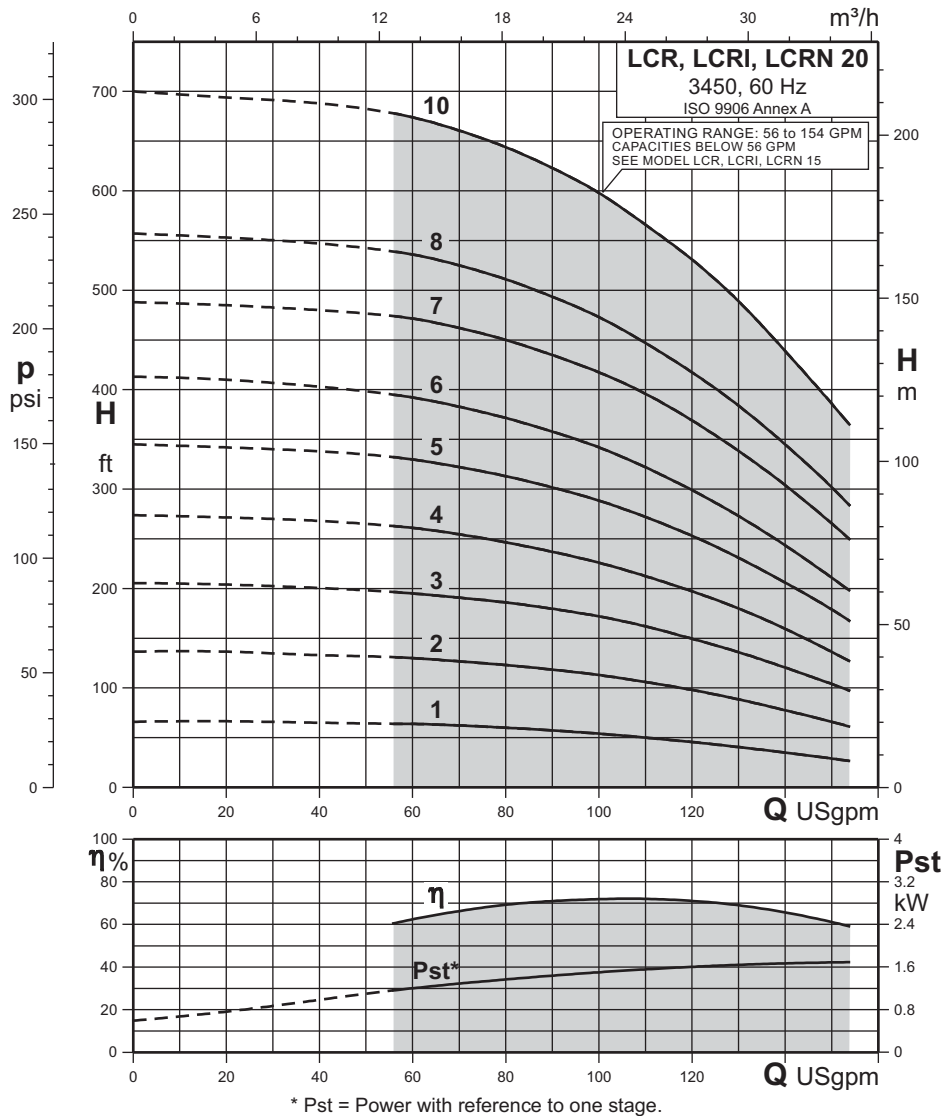
PERFORMANCE CHART

PUMP TYPE	HP	kW	Q l/min USgpm	n = 3450 rpm									
				189.3	265	302.8	340.7	378.5	416.4	454.2	473.2		
				50	70	80	90	100	110	120	125		
LCR, LCRI, LCRN 15/1	2	1.50	H ft.	61	55	52	49	45	40	34	30		
LCR, LCRI, LCRN 15/2	5	3.70		124	115	110	104	97	87	76	70		
LCR, LCRI, LCRN 15/3	5	3.70		185	172	163	153	141	127	111	102		
LCR, LCRI, LCRN 15/4	7 1/2	5.50		248	232	220	207	191	173	152	140		
LCR, LCRI, LCRN 15/5	10	7.50		309	288	275	259	239	216	189	172		
LCR, LCRI, LCRN 15/6	10	7.50		366	341	323	302	278	250	219	201		
LCR, LCRI, LCRN 15/7	15	11.0		434	404	383	359	332	301	264	247		
LCR, LCRI, LCRN 15/8	15	11.0		493	460	436	409	377	339	298	276		
LCR, LCRI, LCRN 15/9	15	11.0		552	516	488	456	420	377	329	304		
LCR, LCRI, LCRN 15/10	20	15.0		631	593	565	532	492	445	394	367		
LCR, LCRI, LCRN 15/12	25	18.5		766	720	686	645	599	545	484	450		

PERFORMANCE CURVES

110 GPM

LCR, LCRI, LCRN 20



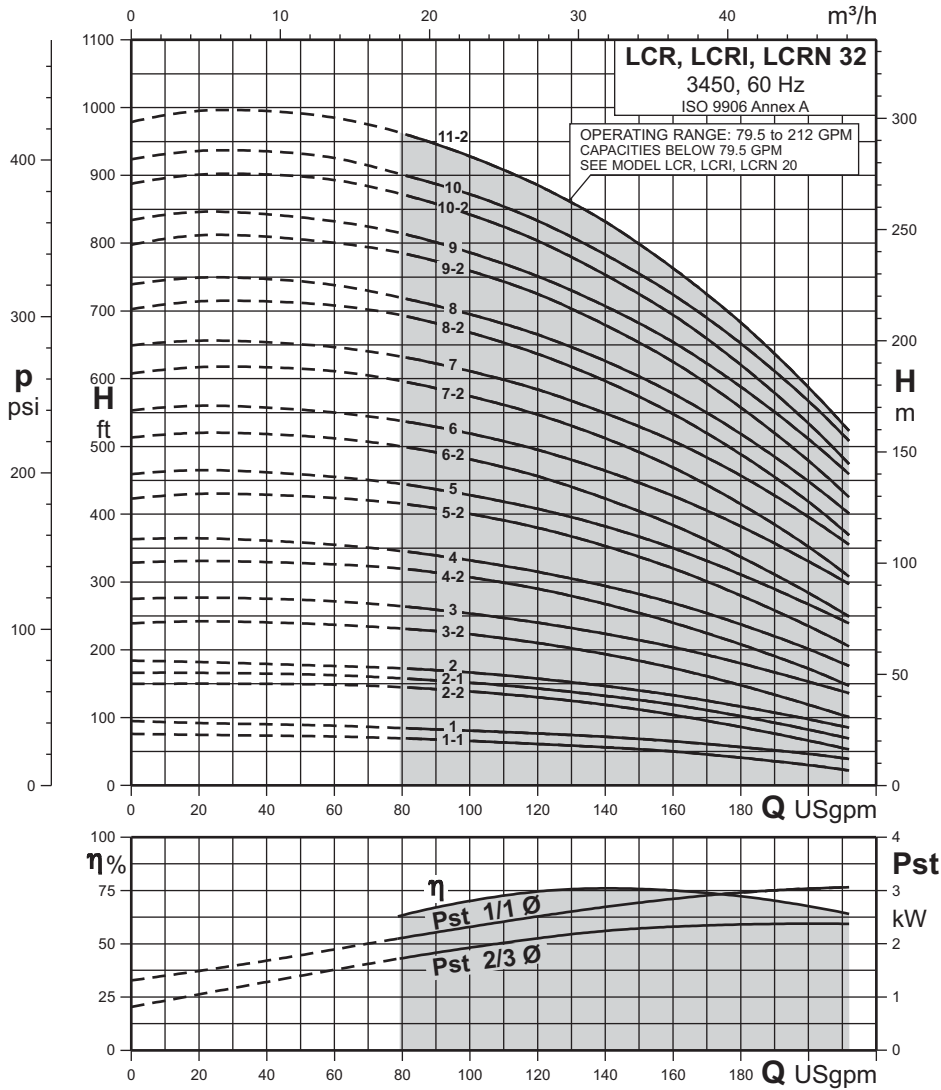
PERFORMANCE CHART

PUMP TYPE	HP	kW	Q l/min USgpm	n = 3450 rpm								
				227.1	378.5	416.4	454.2	492.1	530	567.8	583	
				60	100	110	120	130	140	150	154	
LCR, LCRI, LCRN 20/1	3	2.20	H ft.	64	54	50	46	41	35	29	27	
LCR, LCRI, LCRN 20/2	5	3.70		130	113	106	98	89	78	66	61	
LCR, LCRI, LCRN 20/3	7 1/2	5.50		195	172	162	150	136	121	104	97	
LCR, LCRI, LCRN 20/4	10	7.50		261	226	213	197	180	160	136	127	
LCR, LCRI, LCRN 20/5	15	11.0		330	289	272	253	231	206	179	167	
LCR, LCRI, LCRN 20/6	15	11.0		392	342	322	299	273	244	211	198	
LCR, LCRI, LCRN 20/7	20	15.0		472	418	396	369	339	304	266	249	
LCR, LCRI, LCRN 20/8	20	15.0		536	473	447	418	384	345	302	283	
LCR, LCRI, LCRN 20/10	25	18.5		674	598	566	531	489	439	386	364	

PERFORMANCE CURVES

140 GPM

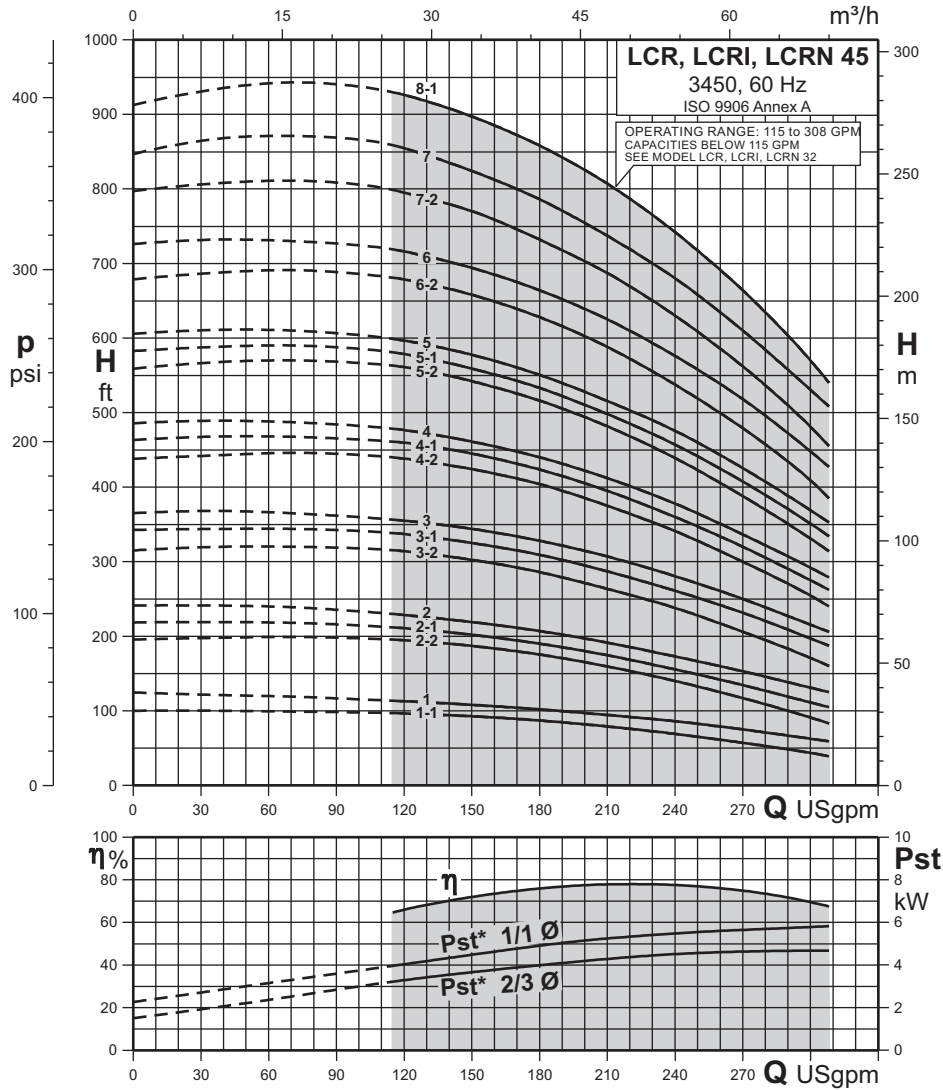
LCR, LCRI, LCRN 32



PERFORMANCE CHART

PUMP TYPE	HP	kW	Q l/min USgpm	n = 3450 rpm								
				302.8	378.5	454.2	530	605.7	681.4	757.1	802.5	
				80	100	120	140	160	180	200	212	
LCR, LCRI, LCRN 32/1-1	3	2.20	H ft.	69	66	61	56	50	41	30	22	
LCR, LCRI, LCRN 32/1	5	3.70		84	81	77	72	65	57	47	39	
LCR, LCRI, LCRN 32/2-2	7 1/2	5.50		145	139	130	119	104	86	66	53	
LCR, LCRI, LCRN 32/2-1	7 1/2	5.50		158	152	143	132	119	102	82	69	
LCR, LCRI, LCRN 32/2	7 1/2	5.50		173	167	158	147	133	116	98	85	
LCR, LCRI, LCRN 32/3-2	10	7.50		231	223	210	194	173	148	119	101	
LCR, LCRI, LCRN 32/3	15	11.0		264	254	240	224	204	180	153	136	
LCR, LCRI, LCRN 32/4-2	15	11.0		319	307	290	268	240	208	172	147	
LCR, LCRI, LCRN 32/4	15	11.0		345	332	315	294	269	238	201	176	
LCR, LCRI, LCRN 32/5-2	20	15.0		416	401	380	353	320	280	235	205	
LCR, LCRI, LCRN 32/5	20	15.0		444	428	408	382	350	311	267	239	
LCR, LCRI, LCRN 32/6-2	25	18.5		500	481	456	423	384	337	284	249	
LCR, LCRI, LCRN 32/6	25	18.5		538	519	495	464	427	382	331	297	
LCR, LCRI, LCRN 32/7-2	25	18.5		597	574	547	512	469	415	352	308	
LCR, LCRI, LCRN 32/7	30	22.0		632	611	584	549	508	457	396	355	
LCR, LCRI, LCRN 32/8-2	30	22.0		692	668	637	597	548	489	419	369	
LCR, LCRI, LCRN 32/8	30	22.0		718	695	665	626	578	519	449	401	
LCR, LCRI, LCRN 32/9-2	40	30.0		785	759	725	679	625	558	479	425	
LCR, LCRI, LCRN 32/9	40	30.0		814	786	751	707	654	588	511	459	
LCR, LCRI, LCRN 32/10-2	40	30.0		871	842	804	753	694	621	534	474	
LCR, LCRI, LCRN 32/10	40	30.0		900	872	833	783	724	652	567	508	
LCR, LCRI, LCRN 32/11-2	40	30.0	962	928	886	832	763	683	587	523		



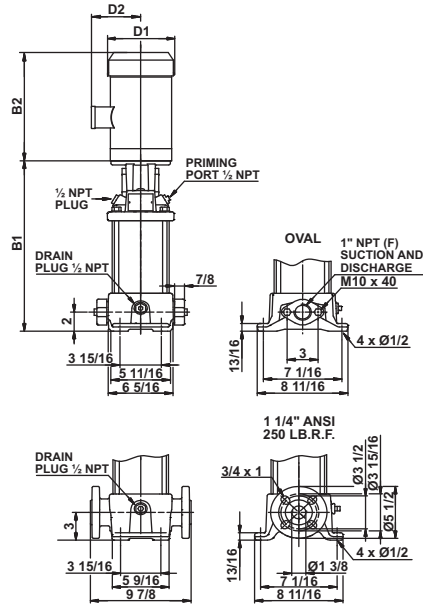


* Pst = Power with reference to one stage.

PERFORMANCE CHART

PUMP TYPE	HP	kW	Q l/min USgpm	n = 3450 rpm								
				454.2	567.8	681.4	794.9	908.5	1022	1136	1166	
				120	150	180	210	240	270	300	308	
LCR, LCRI, LCRN 45/1-1	7 1/2	5.50	H ft.	97	93	87	79	69	57	44	39	
LCR, LCRI, LCRN 45/1	7 1/2	5.50		113	108	102	94	86	75	63	59	
LCR, LCRI, LCRN 45/2-2	15	11.0		195	187	176	160	140	117	91	83	
LCR, LCRI, LCRN 45/2-1	15	11.0		211	202	190	175	156	135	111	105	
LCR, LCRI, LCRN 45/2	15	11.0		229	219	207	191	173	153	131	125	
LCR, LCRI, LCRN 45/3-2	20	15.0		314	303	286	264	238	206	171	160	
LCR, LCRI, LCRN 45/3-1	25	18.5		337	325	309	287	261	232	197	187	
LCR, LCRI, LCRN 45/3	25	18.5		355	344	328	307	281	250	216	206	
LCR, LCRI, LCRN 45/4-2	30	22.0		438	424	404	375	341	300	255	240	
LCR, LCRI, LCRN 45/4-1	30	22.0		460	445	424	395	360	320	275	262	
LCR, LCRI, LCRN 45/4	30	22.0		477	461	440	412	378	337	292	279	
LCR, LCRI, LCRN 45/5-2	40	30.0		561	542	516	482	439	388	331	314	
LCR, LCRI, LCRN 45/5-1	40	30.0		579	559	533	498	457	408	351	334	
LCR, LCRI, LCRN 45/5	40	30.0		597	578	551	516	476	426	369	353	
LCR, LCRI, LCRN 45/6-2	50	37.0		679	658	628	588	538	479	409	385	
LCR, LCRI, LCRN 45/6	50	37.0		716	694	664	625	576	518	448	427	
LCR, LCRI, LCRN 45/7-2	50	37.0		795	770	732	687	630	562	481	455	
LCR, LCRI, LCRN 45/7	60	45.0		855	824	786	737	680	610	531	508	
LCR, LCRI, LCRN 45/8-1	60	45.0		926	897	858	807	742	664	570	540	





DIMENSIONS & WEIGHTS OF LCR PUMP

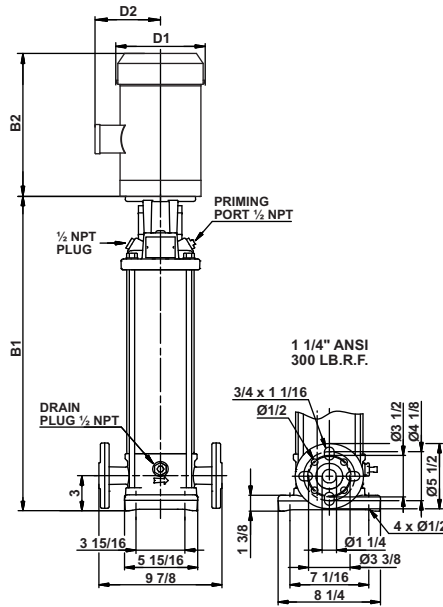
PUMP TYPE	HP	PH	OVAL*	ANSI DIMENSIONS [inch]							SHIP WEIGHT [lbs.]**	GROSS VOLUME [ft ³]
				B1	TEFC			ODP				
					B1+B2	D1	D2	B1+B2	D1	D2		
LCR 1s/2	1/3	1	•	10 1/4	21 1/8	6 1/3	4 7/8	20 1/3	5 5/8	4 1/2	34	3.1
		3	•	10 1/4	20 1/8	6 1/3	4 7/8	20 1/3	5 5/8	-		
LCR 1s/3	1/3	1	•	11	21 7/8	6 1/3	4 7/8	21	5 5/8	4 1/2	39	3.1
		3	•	11	20 7/8	6 1/3	4 7/8	21	5 5/8	-		
LCR 1s/4	1/3	1	•	11 3/4	22 1/2	6 1/3	4 7/8	21 5/8	5 5/8	4 1/2	44	3.1
		3	•	11 3/4	21 1/2	6 1/3	4 7/8	21 5/8	5 5/8	-		
LCR 1s/5	1/3	1	•	12 1/2	23 1/4	6 1/3	4 7/8	22 1/2	5 5/8	4 1/2	49	3.1
		3	•	12 1/2	22 1/4	6 1/3	4 7/8	22 1/2	5 5/8	-		
LCR 1s/6	1/2	1	•	13 1/8	24	6 1/3	4 7/8	23 1/8	5 5/8	4 1/2	55	3.1
		3	•	13 1/8	23	6 1/3	4 7/8	23 1/8	5 5/8	-		
LCR 1s/7	1/2	1	•	13 7/8	24 5/8	6 1/3	4 7/8	23 7/8	5 5/8	4 1/2	60	3.1
		3	•	13 7/8	23 5/8	6 1/3	4 7/8	23 7/8	5 5/8	-		
LCR 1s/8	1/2	1	•	14 1/2	25 1/3	6 1/3	4 7/8	24 1/2	5 5/8	4 1/2	62	3.1
		3	•	14 1/2	24 1/3	6 1/3	4 7/8	24 1/2	5 5/8	-		
LCR 1s/9	3/4	1	•	15 1/4	26 5/8	6 1/3	4 7/8	26 1/8	5 5/8	4 1/2	65	3.1
		3	•	15 1/4	25 1/2	6 1/3	4 7/8	26 1/8	5 5/8	-		
LCR 1s/10	3/4	1	•	16	27 1/3	6 1/3	4 7/8	26 3/4	5 5/8	4 1/2	65	3.1
		3	•	16	26 1/8	6 1/3	4 7/8	26 3/4	5 5/8	-		
LCR 1s/11	3/4	1	•	16 5/8	28 1/8	6 1/3	4 7/8	27 1/2	5 5/8	4 1/2	66	3.1
		3	•	16 5/8	26 7/8	6 1/3	4 7/8	27 1/2	5 5/8	-		
LCR 1s/12	3/4	1	•	17 1/3	28 3/4	6 1/3	4 7/8	28 1/4	5 5/8	4 1/2	67	3.1
		3	•	17 1/3	27 5/8	6 1/3	4 7/8	28 1/4	5 5/8	-		
LCR 1s/13	1	1	•	18 1/8	30 1/4	6 1/3	4 7/8	29 1/4	5 5/8	4 1/2	67	3.1
		3	•	18 1/8	29 1/2	6 1/3	4 7/8	28 7/8	5 5/8	-		
LCR 1s/15	1	1	•	19 1/2	31 5/8	6 1/3	4 7/8	30 3/4	5 5/8	4 1/2	69	3.1
		3	•	19 1/2	30 7/8	6 1/3	4 7/8	30 1/3	5 5/8	-		
LCR 1s/17	1 1/2	1	•	20 7/8	31 7/8	7 1/4	5 1/3	31 7/8	6 1/2	4 7/8	70	3.1
		3	•	20 7/8	31 1/3	7 1/4	5 1/3	31 1/3	6 1/2	-		
LCR 1s/19	1 1/2	1	-	22 1/3	33 1/3	7 1/4	5 1/3	33 1/3	6 1/2	4 7/8	71	3.1
		3	-	22 1/3	32 3/4	7 1/4	5 1/3	32 3/4	6 1/2	-		
LCR 1s/21	1 1/2	1	-	24	35	7 1/4	5 1/3	35	6 1/2	4 7/8	72	3.1
		3	-	24	34 1/2	7 1/4	5 1/3	34 1/2	6 1/2	-		
LCR 1s/23	1 1/2	1	-	25 1/3	36 1/3	7 1/4	5 1/3	36 1/3	6 1/2	4 7/8	73	3.1
		3	-	25 1/3	35 3/4	7 1/4	5 1/3	35 3/4	6 1/2	-		
LCR 1s/25	2	1	-	26 7/8	38 1/2	7 1/4	5 1/3	38 7/8	6 1/2	4 7/8	75	3.1
		3	-	26 7/8	37 7/8	7 1/4	5 1/3	37 5/8	6 1/2	-		
LCR 1s/27	2	1	-	28 1/4	39 7/8	7 1/4	5 1/3	40 1/4	6 1/2	4 7/8	76	3.1
		3	-	28 1/4	39 1/4	7 1/4	5 1/3	39	6 1/2	-		

All dimensions in inches unless otherwise noted.

* Oval flanged pump B1 and B1+B2 dimension is one inch less than ANSI flanged pump and weight is approximately 9 lbs. less.

** Weights shown are in lbs. for pump end only.

• Available.



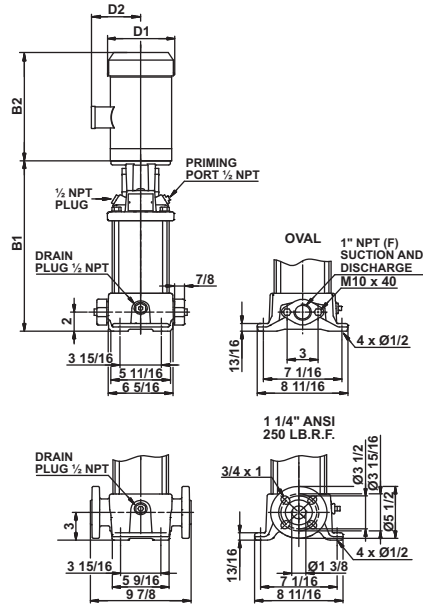
DIMENSIONS & WEIGHTS OF LCRI, LCRN PUMP

PUMP TYPE	HP	PH	ANSI DIMENSIONS [inch]							SHIP WEIGHT [lbs.]**	GROSS VOLUME [ft ³]
			B1	TEFC			ODP				
				B1+B2	D1	D2	B1+B2	D1	D2		
LCRI, LCRN 1s/2	1/3	1	10 1/3	21 1/4	6 1/3	4 7/8	20 1/2	5 5/8	4 1/2	34	3.1
		3	10 1/3	20 1/4	6 1/3	4 7/8	20 1/2	5 5/8	-		
LCRI, LCRN 1s/3	1/3	1	11 1/8	21 7/8	6 1/3	4 7/8	21 1/8	5 5/8	4 1/2	39	3.1
		3	11 1/8	21	6 1/3	4 7/8	21 1/8	5 5/8	-		
LCRI, LCRN 1s/4	1/3	1	11 3/4	22 5/8	6 1/3	4 7/8	21 7/8	5 5/8	4 1/2	44	3.1
		3	11 3/4	21 5/8	6 1/3	4 7/8	21 7/8	5 5/8	-		
LCRI, LCRN 1s/5	1/3	1	12 1/2	23 1/3	6 1/3	4 7/8	22 1/2	5 5/8	4 1/2	49	3.1
		3	12 1/2	22 1/3	6 1/3	4 7/8	22 1/2	5 5/8	-		
LCRI, LCRN 1s/6	1/2	1	13 1/4	24	6 1/3	4 7/8	23 1/4	5 5/8	4 1/2	55	3.1
		3	13 1/4	23 1/8	6 1/3	4 7/8	23 1/4	5 5/8	-		
LCRI, LCRN 1s/7	1/2	1	13 7/8	24 3/4	6 1/3	4 7/8	24	5 5/8	4 1/2	60	3.1
		3	13 7/8	23 3/4	6 1/3	4 7/8	24	5 5/8	-		
LCRI, LCRN 1s/8	1/2	1	14 5/8	25 1/2	6 1/3	4 7/8	24 5/8	5 5/8	4 1/2	62	3.1
		3	14 5/8	24 1/2	6 1/3	4 7/8	24 5/8	5 5/8	-		
LCRI, LCRN 1s/9	3/4	1	15 1/3	26 3/4	6 1/3	4 7/8	26 1/8	5 5/8	4 1/2	65	3.1
		3	15 1/3	25 5/8	6 1/3	4 7/8	26 1/8	5 5/8	-		
LCRI, LCRN 1s/10	3/4	1	16 1/8	27 1/2	6 1/3	4 7/8	26 7/8	5 5/8	4 1/2	65	3.1
		3	16 1/8	26 1/3	6 1/3	4 7/8	26 7/8	5 5/8	-		
LCRI, LCRN 1s/11	3/4	1	16 3/4	28 1/4	6 1/3	4 7/8	27 5/8	5 5/8	4 1/2	66	3.1
		3	16 3/4	27	6 1/3	4 7/8	27 5/8	5 5/8	-		
LCRI, LCRN 1s/12	3/4	1	17 1/2	28 7/8	6 1/3	4 7/8	28 1/3	5 5/8	4 1/2	67	3.1
		3	17 1/2	27 3/4	6 1/3	4 7/8	28 1/3	5 5/8	-		
LCRI, LCRN 1s/13	1	1	18 1/8	30 1/3	6 1/3	4 7/8	29 1/2	5 5/8	4 1/2	67	3.1
		3	18 1/8	29 5/8	6 1/3	4 7/8	29	5 5/8	-		
LCRI, LCRN 1s/15	1	1	19 5/8	31 3/4	6 1/3	4 7/8	30 7/8	5 5/8	4 1/2	69	3.1
		3	19 5/8	31	6 1/3	4 7/8	30 1/2	5 5/8	-		
LCRI, LCRN 1s/17	1 1/2	1	21	32	7 1/4	5 1/3	32	6 1/2	4 7/8	70	3.1
		3	21	31 1/2	7 1/4	5 1/3	31 1/2	6 1/2	-		
LCRI, LCRN 1s/19	1 1/2	1	22 1/2	33 1/2	7 1/4	5 1/3	33 1/2	6 1/2	4 7/8	71	3.1
		3	22 1/2	32 7/8	7 1/4	5 1/3	32 7/8	6 1/2	-		
LCRI, LCRN 1s/21	1 1/2	1	24 1/8	35 1/8	7 1/4	5 1/3	35 1/8	6 1/2	4 7/8	72	3.1
		3	24 1/8	34 1/2	7 1/4	5 1/3	34 1/2	6 1/2	-		
LCRI, LCRN 1s/23	1 1/2	1	25 1/2	36 1/2	7 1/4	5 1/3	36 1/2	6 1/2	4 7/8	73	3.1
		3	25 1/2	36	7 1/4	5 1/3	36	6 1/2	-		
LCRI, LCRN 1s/25	2	1	26 7/8	38 1/2	7 1/4	5 1/3	39	6 1/2	4 7/8	75	3.1
		3	26 7/8	38	7 1/4	5 1/3	37 3/4	6 1/2	-		
LCRI, LCRN 1s/27	2	1	28 1/3	40	7 1/4	5 1/3	40 1/3	6 1/2	4 7/8	76	3.1
		3	28 1/3	39 1/3	7 1/4	5 1/3	39 1/8	6 1/2	-		

All dimensions in inches unless otherwise noted.

** Weights shown are in lbs. for pump end only.





DIMENSIONS & WEIGHTS OF LCR PUMP

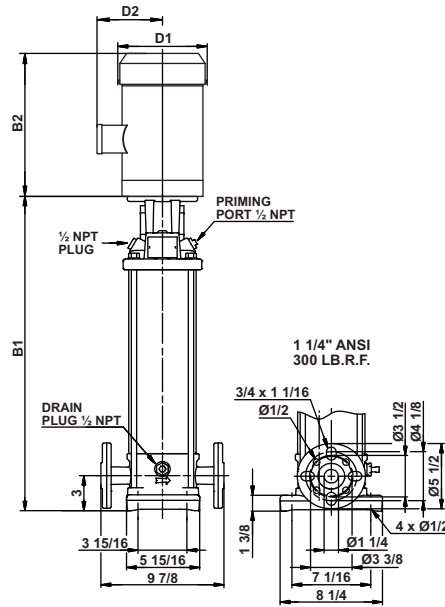
PUMP TYPE	HP	PH	OVAL*	ANSI DIMENSIONS [inch]							SHIP WEIGHT [lbs.]**	GROSS VOLUME [ft ³]
				B1	TEFC			ODP				
					B1+B2	D1	D2	B1+B2	D1	D2		
LCR 1/2	1/3	1	•	10 1/4	21 1/8	6 1/3	4 7/8	20 1/3	5 5/8	4 1/2	34	3.1
		3	•	10 1/4	20 1/8	6 1/3	4 7/8	20 1/3	5 5/8	-		
LCR 1/3	1/3	1	•	11	21 7/8	6 1/3	4 7/8	21	5 5/8	4 1/2	39	3.1
		3	•	11	20 7/8	6 1/3	4 7/8	21	5 5/8	-		
LCR 1/4	1/2	1	•	11 3/4	22 1/2	6 1/3	4 7/8	21 5/8	5 5/8	4 1/2	44	3.1
		3	•	11 3/4	21 1/2	6 1/3	4 7/8	21 5/8	5 5/8	-		
LCR 1/5	1/2	1	•	12 1/2	23 1/4	6 1/3	4 7/8	22 1/2	5 5/8	4 1/2	49	3.1
		3	•	12 1/2	22 1/4	6 1/3	4 7/8	22 1/2	5 5/8	-		
LCR 1/6	3/4	1	•	13 1/8	24 1/2	6 1/3	4 7/8	24	5 5/8	4 1/2	55	3.1
		3	•	13 1/8	23 1/3	6 1/3	4 7/8	24	5 5/8	-		
LCR 1/7	3/4	1	•	13 7/8	25 1/4	6 1/3	4 7/8	24 5/8	5 5/8	4 1/2	60	3.1
		3	•	13 7/8	24	6 1/3	4 7/8	24 5/8	5 5/8	-		
LCR 1/8	1	1	•	14 1/2	26 3/4	6 1/3	4 7/8	25 3/4	5 5/8	4 1/2	62	3.1
		3	•	14 1/2	26	6 1/3	4 7/8	25 1/3	5 5/8	-		
LCR 1/9	1	1	•	15 1/4	27 1/2	6 1/3	4 7/8	26 1/2	5 5/8	4 1/2	65	3.1
		3	•	15 1/4	26 5/8	6 1/3	4 7/8	26 1/8	5 5/8	-		
LCR 1/10	1	1	•	16	28 1/8	6 1/3	4 7/8	27 1/8	5 5/8	4 1/2	65	3.1
		3	•	16	27 1/3	6 1/3	4 7/8	26 3/4	5 5/8	-		
LCR 1/11	1 1/2	1	•	16 5/8	27 5/8	7 1/4	5 1/3	27 5/8	6 1/2	4 7/8	66	3.1
		3	•	16 5/8	27 1/8	7 1/4	5 1/3	27 1/8	6 1/2	-		
LCR 1/12	1 1/2	1	•	17 5/8	28 5/8	7 1/4	5 1/3	28 5/8	6 1/2	4 7/8	67	3.1
		3	•	17 5/8	28	7 1/4	5 1/3	28	6 1/2	-		
LCR 1/13	1 1/2	1	•	18 1/3	29 1/3	7 1/4	5 1/3	29 1/3	6 1/2	4 7/8	67	3.1
		3	•	18 1/3	28 3/4	7 1/4	5 1/3	28 3/4	6 1/2	-		
LCR 1/15	2	1	•	19 3/4	31 1/3	7 1/4	5 1/3	31 3/4	6 1/2	4 7/8	69	3.1
		3	•	19 3/4	30 3/4	7 1/4	5 1/3	30 1/2	6 1/2	-		
LCR 1/17	2	1	•	21 1/8	32 3/4	7 1/4	5 1/3	33 1/8	6 1/2	4 7/8	70	3.1
		3	•	21 1/8	32 1/8	7 1/4	5 1/3	32	6 1/2	-		
LCR 1/19	2	1	-	22 1/2	34 1/8	7 1/4	5 1/3	34 1/2	6 1/2	4 7/8	71	3.1
		3	-	22 1/2	33 5/8	7 1/4	5 1/3	33 1/3	6 1/2	-		
LCR 1/21	3	1	-	24	36 3/4	7 1/4	5 1/3	-	-	-	72	3.1
		3	-	24	35 3/4	7 1/4	5 1/3	-	-	-		
LCR 1/23	3	1	-	25 1/3	38 1/8	7 1/4	5 1/3	-	-	-	73	3.1
		3	-	25 1/3	37 1/8	7 1/4	5 1/3	-	-	-		
LCR 1/25	3	1	-	27 1/2	40 1/4	7 1/4	5 1/3	-	-	-	75	3.1
		3	-	27 1/2	39 1/4	7 1/4	5 1/3	-	-	-		
LCR 1/27	3	1	-	28 7/8	41 5/8	7 1/4	5 1/3	-	-	-	76	3.1
		3	-	28 7/8	40 5/8	7 1/4	5 1/3	-	-	-		

All dimensions in inches unless otherwise noted.

* Oval flanged pump B1 and B1+B2 dimension is one inch less than ANSI flanged pump and weight is approximately 9 lbs. less.

** Weights shown are in lbs. for pump end only.

• Available.



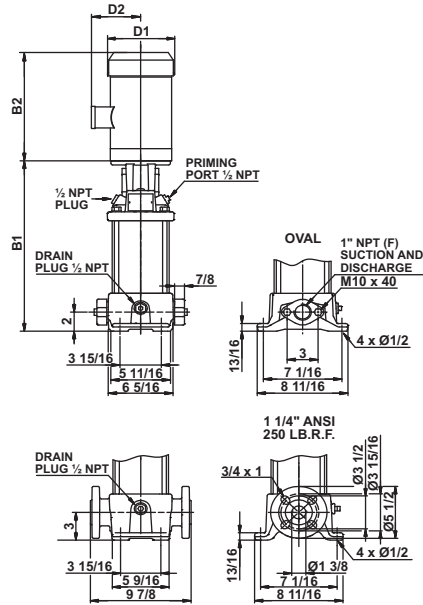
DIMENSIONS & WEIGHTS OF LCRI, LCRN PUMP

PUMP TYPE	HP	PH	ANSI DIMENSIONS [inch]							SHIP WEIGHT [lbs.]**	GROSS VOLUME [ft ³]
			B1	TEFC			ODP				
				B1+B2	D1	D2	B1+B2	D1	D2		
LCRI, LCRN 1/2	1/3	1	10 1/3	21 1/4	6 1/3	4 7/8	20 1/2	5 5/8	4 1/2	34	3.1
		3	10 1/3	20 1/4	6 1/3	4 7/8	20 1/2	5 5/8	-		
LCRI, LCRN 1/3	1/3	1	11 1/8	21 7/8	6 1/3	4 7/8	21 1/8	5 5/8	4 1/2	39	3.1
		3	11 1/8	21	6 1/3	4 7/8	21 1/8	5 5/8	-		
LCRI, LCRN 1/4	1/2	1	11 3/4	22 5/8	6 1/3	4 7/8	21 7/8	5 5/8	4 1/2	44	3.1
		3	11 3/4	21 5/8	6 1/3	4 7/8	21 7/8	5 5/8	-		
LCRI, LCRN 1/5	1/2	1	12 1/2	23 1/3	6 1/3	4 7/8	22 1/2	5 5/8	4 1/2	49	3.1
		3	12 1/2	22 1/3	6 1/3	4 7/8	22 1/2	5 5/8	-		
LCRI, LCRN 1/6	3/4	1	13 1/4	24 5/8	6 1/3	4 7/8	24	5 5/8	4 1/2	55	3.1
		3	13 1/4	23 1/2	6 1/3	4 7/8	24	5 5/8	-		
LCRI, LCRN 1/7	3/4	1	13 7/8	25 1/3	6 1/3	4 7/8	24 3/4	5 5/8	4 1/2	60	3.1
		3	13 7/8	24 1/8	6 1/3	4 7/8	24 3/4	5 5/8	-		
LCRI, LCRN 1/8	1	1	14 5/8	26 7/8	6 1/3	4 7/8	25 7/8	5 5/8	4 1/2	62	3.1
		3	14 5/8	26 1/8	6 1/3	4 7/8	25 1/2	5 5/8	-		
LCRI, LCRN 1/9	1	1	15 1/3	27 1/2	6 1/3	4 7/8	26 5/8	5 5/8	4 1/2	65	3.1
		3	15 1/3	26 3/4	6 1/3	4 7/8	26 1/8	5 5/8	-		
LCRI, LCRN 1/10	1	1	16 1/8	28 1/4	6 1/3	4 7/8	27 1/4	5 5/8	4 1/2	65	3.1
		3	16 1/8	27 1/2	6 1/3	4 7/8	26 7/8	5 5/8	-		
LCRI, LCRN 1/11	1 1/2	1	16 3/4	27 3/4	7 1/4	5 1/3	27 7/8	6 1/2	4 7/8	66	3.1
		3	16 3/4	27 1/4	7 1/4	5 1/3	27 1/4	6 1/2	-		
LCRI, LCRN 1/12	1 1/2	1	17 3/4	28 3/4	7 1/4	5 1/3	28 3/4	6 1/2	4 7/8	67	3.1
		3	17 3/4	28 1/8	7 1/4	5 1/3	28 1/8	6 1/2	-		
LCRI, LCRN 1/13	1 1/2	1	18 1/2	29 1/2	7 1/4	5 1/3	29 1/2	6 1/2	4 7/8	67	3.1
		3	18 1/2	28 7/8	7 1/4	5 1/3	28 7/8	6 1/2	-		
LCRI, LCRN 1/15	2	1	19 7/8	31 1/2	7 1/4	5 1/3	31 7/8	6 1/2	4 7/8	69	3.1
		3	19 7/8	30 7/8	7 1/4	5 1/3	30 5/8	6 1/2	-		
LCRI, LCRN 1/17	2	1	21 1/4	32 7/8	7 1/4	5 1/3	33 1/4	6 1/2	4 7/8	70	3.1
		3	21 1/4	32 1/4	7 1/4	5 1/3	32 1/8	6 1/2	-		
LCRI, LCRN 1/19	2	1	22 5/8	34 1/4	7 1/4	5 1/3	34 5/8	6 1/2	4 7/8	71	3.1
		3	22 5/8	33 3/4	7 1/4	5 1/3	33 1/2	6 1/2	-		
LCRI, LCRN 1/21	3	1	24 1/8	36 7/8	7 1/4	5 1/3	-	-	-	72	3.1
		3	24 1/8	35 7/8	7 1/4	5 1/3	-	-	-		
LCRI, LCRN 1/23	3	1	25 1/2	38 1/3	7 1/4	5 1/3	-	-	-	73	3.1
		3	25 1/2	37 1/3	7 1/4	5 1/3	-	-	-		
LCRI, LCRN 1/25	3	1	27 1/2	40 1/3	7 1/4	5 1/3	-	-	-	75	3.1
		3	27 1/2	39 1/3	7 1/4	5 1/3	-	-	-		
LCRI, LCRN 1/27	3	1	29	41 3/4	7 1/4	5 1/3	-	-	-	76	3.1
		3	29	40 3/4	7 1/4	5 1/3	-	-	-		

All dimensions in inches unless otherwise noted.

** Weights shown are in lbs. for pump end only.





DIMENSIONS & WEIGHTS OF LCR PUMP

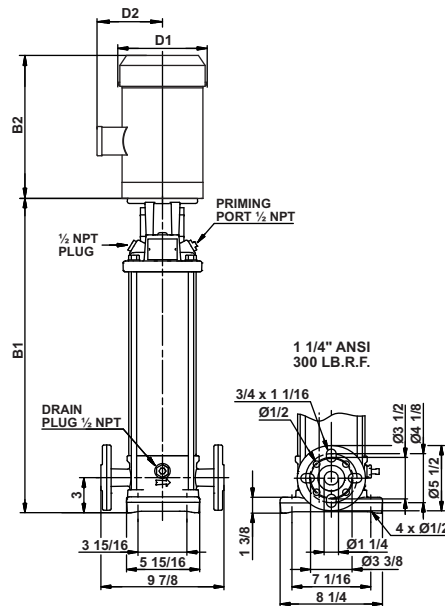
PUMP TYPE	HP	PH	OVAL*	ANSI DIMENSIONS [inch]							SHIP WEIGHT [lbs.]**	GROSS VOLUME [ft ³]
				B1	TEFC			ODP				
					B1+B2	D1	D2	B1+B2	D1	D2		
LCR 2/3-2	1/2	1	•	10 1/4	21 1/8	6 1/3	4 7/8	20 1/3	5 5/8	4 1/2	34	3.1
		3	•	10 1/4	20 1/8	6 1/3	4 7/8	20 1/3	5 5/8	-		
LCR 2/3	3/4	1	•	11	22 1/2	6 1/3	4 7/8	21 7/8	5 5/8	4 1/2	39	3.1
		3	•	11	21 1/4	6 1/3	4 7/8	21 7/8	5 5/8	-		
LCR 2/4	1	1	•	11 3/4	23 7/8	6 1/3	4 7/8	22 7/8	5 5/8	4 1/2	44	3.1
		3	•	11 3/4	23 1/8	6 1/3	4 7/8	22 1/2	5 5/8	-		
LCR 2/5	1 1/2	1	•	12 1/3	23 1/3	7 1/4	5 1/3	23 1/2	6 1/2	4 7/8	49	3.1
		3	•	12 1/3	22 3/4	7 1/4	5 1/3	22 7/8	6 1/2	-		
LCR 2/6	1 1/2	1	•	13 1/8	24 1/8	7 1/4	5 1/3	24 1/8	6 1/2	4 7/8	55	3.1
		3	•	13 1/8	23 1/2	7 1/4	5 1/3	23 1/2	6 1/2	-		
LCR 2/7	2	1	•	13 7/8	25 1/2	7 1/4	5 1/3	25 7/8	6 1/2	4 7/8	60	3.1
		3	•	13 7/8	24 7/8	7 1/4	5 1/3	24 5/8	6 1/2	-		
LCR 2/8	2	1	•	14 1/2	26 1/8	7 1/4	5 1/3	26 1/2	6 1/2	4 7/8	62	3.1
		3	•	14 1/2	25 1/2	7 1/4	5 1/3	25 1/3	6 1/2	-		
LCR 2/9	3	1	•	15 1/2	28 1/4	7 1/4	5 1/3	-	-	-	63	3.1
		3	•	15 1/2	27 1/4	7 1/4	5 1/3	-	-	-		
LCR 2/10	3	1	•	16 1/8	29	7 1/4	5 1/3	-	-	-	65	3.1
		3	•	16 1/8	28	7 1/4	5 1/3	-	-	-		
LCR 2/11	3	1	•	16 7/8	29 5/8	7 1/4	5 1/3	-	-	-	66	3.1
		3	•	16 7/8	28 3/4	7 1/4	5 1/3	-	-	-		
LCR 2/12	3	1	-	17 5/8	30 1/2	7 1/4	5 1/3	-	-	-	67	3.1
		3	-	17 5/8	29 1/2	7 1/4	5 1/3	-	-	-		
LCR 2/13	3	1	-	18 1/3	31 1/8	7 1/4	5 1/3	-	-	-	67	3.1
		3	-	18 1/3	30 1/8	7 1/4	5 1/3	-	-	-		
LCR 2/14	5	3	-	19	34	8 3/4	6 1/2	-	-	-	67	3.1
LCR 2/15	5	3	-	19 3/4	34 5/8	8 3/4	6 1/2	-	-	-	69	3.1
LCR 2/16	5	3	-	20 5/8	35 5/8	8 3/4	6 1/2	-	-	-	68	3.1
LCR 2/17	5	3	-	21 1/2	36 1/2	8 3/4	6 1/2	-	-	-	70	3.1
LCR 2/18	5	3	-	22 1/2	37 1/2	8 3/4	6 1/2	-	-	-	70	3.1

All dimensions in inches unless otherwise noted.

* Oval flanged pump B1 and B1+B2 dimension is one inch less than ANSI flanged pump and weight is approximately 9 lbs. less.

** Weights shown are in lbs. for pump end only.

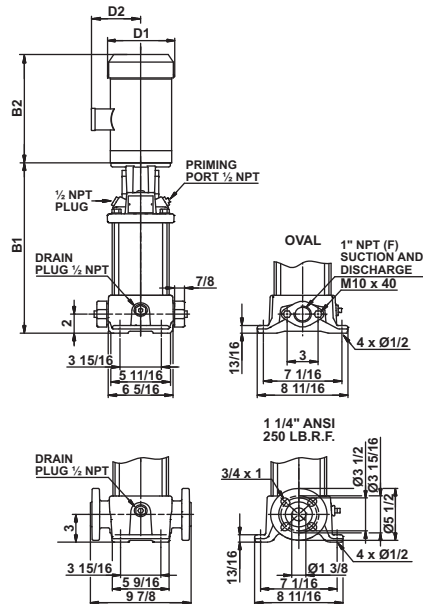
• Available.



DIMENSIONS & WEIGHTS OF LCRI, LCRN PUMP

PUMP TYPE	HP	PH	ANSI DIMENSIONS [inch]							SHIP WEIGHT [lbs.]*	GROSS VOLUME [ft ³]
			B1	TEFC			ODP				
				B1+B2	D1	D2	B1+B2	D1	D2		
LCRI, LCRN 2/3-2	1/2	1	10 1/3	21 1/4	6 1/3	4 7/8	20 1/2	5 5/8	4 1/2	34	3.1
		3	10 1/3	20 1/4	6 1/3	4 7/8	20 1/2	5 5/8	-		
LCRI, LCRN 2/3	3/4	1	11 1/8	22 1/2	6 1/3	4 7/8	21 7/8	5 5/8	4 1/2	39	3.1
		3	11 1/8	21 1/3	6 1/3	4 7/8	21 7/8	5 5/8	-		
LCRI, LCRN 2/4	1	1	11 3/4	24	6 1/3	4 7/8	23	5 5/8	4 1/2	44	3.1
		3	11 3/4	23 1/4	6 1/3	4 7/8	22 5/8	5 5/8	-		
LCRI, LCRN 2/5	1 1/2	1	12 1/2	23 1/2	7 1/4	5 1/3	23 1/2	6 1/2	4 7/8	49	3.1
		3	12 1/2	23	7 1/4	5 1/3	23	6 1/2	-		
LCRI, LCRN 2/6	1 1/2	1	13 1/4	24 1/4	7 1/4	5 1/3	24 1/4	6 1/2	4 7/8	55	3.1
		3	13 1/4	23 5/8	7 1/4	5 1/3	23 5/8	6 1/2	-		
LCRI, LCRN 2/7	2	1	14	25 1/2	7 1/4	5 1/3	26	6 1/2	4 7/8	60	3.1
		3	14	25	7 1/4	5 1/3	24 3/4	6 1/2	-		
LCRI, LCRN 2/8	2	1	14 5/8	26 1/4	7 1/4	5 1/3	26 5/8	6 1/2	4 7/8	62	3.1
		3	14 5/8	25 5/8	7 1/4	5 1/3	25 1/2	6 1/2	-		
LCRI, LCRN 2/9	3	1	15 5/8	28 1/3	7 1/4	5 1/3	-	-	-	63	3.1
		3	15 5/8	27 1/2	7 1/4	5 1/3	-	-	-		
LCRI, LCRN 2/10	3	1	16 1/3	29 1/8	7 1/4	5 1/3	-	-	-	65	3.1
		3	16 1/3	28 1/8	7 1/4	5 1/3	-	-	-		
LCRI, LCRN 2/11	3	1	17	29 7/8	7 1/4	5 1/3	-	-	-	66	3.1
		3	17	28 7/8	7 1/4	5 1/3	-	-	-		
LCRI, LCRN 2/12	3	1	17 3/4	30 1/2	7 1/4	5 1/3	-	-	-	67	3.1
		3	17 3/4	29 1/2	7 1/4	5 1/3	-	-	-		
LCRI, LCRN 2/13	3	1	18 1/2	31 1/4	7 1/4	5 1/3	-	-	-	67	3.1
		3	18 1/2	30 1/4	7 1/4	5 1/3	-	-	-		
LCRI, LCRN 2/14	5	3	19 1/8	34 1/8	8 3/4	6 1/2	-	-	-	67	3.1
LCRI, LCRN 2/15	5	3	19 7/8	34 7/8	8 3/4	6 1/2	-	-	-	69	3.1
LCRI, LCRN 2/16	5	3	20 3/4	35 3/4	8 3/4	6 1/2	-	-	-	68	3.1
LCRI, LCRN 2/17	5	3	21 5/8	36 5/8	8 3/4	6 1/2	-	-	-	70	3.1
LCRI, LCRN 2/18	5	3	22 5/8	37 1/2	8 3/4	6 1/2	-	-	-	70	3.1

All dimensions in inches unless otherwise noted.
 ** Weights shown are in lbs. for pump end only.



DIMENSIONS & WEIGHTS OF LCR PUMP

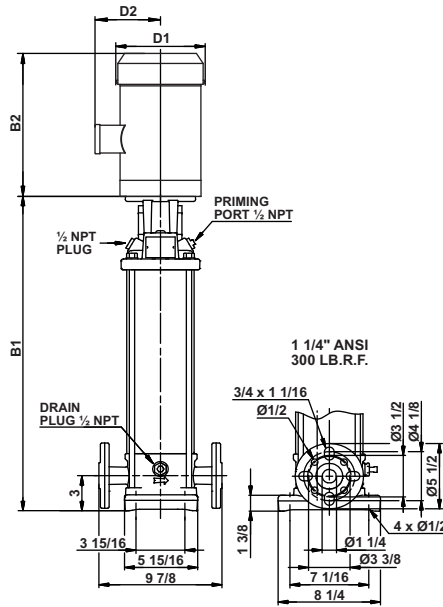
PUMP TYPE	HP	PH	OVAL*	ANSI DIMENSIONS [inch]							SHIP WEIGHT [lbs.]**	GROSS VOLUME [ft ³]
				B1	TEFC			ODP				
					B1+B2	D1	D2	B1+B2	D1	D2		
LCR 3/2	1/3	1	•	10 1/4	21 1/8	6 1/3	4 7/8	20 1/3	5 5/8	4 1/2	34	3.1
		3	•	10 1/4	20 1/8	6 1/3	4 7/8	20 1/3	5 5/8	-		
LCR 3/3	1/2	1	•	11	21 7/8	6 1/3	4 7/8	21	5 5/8	4 1/2	39	3.1
		3	•	11	20 7/8	6 1/3	4 7/8	21	5 5/8	-		
LCR 3/4	3/4	1	•	11 5/8	23 1/8	6 1/3	4 7/8	22 1/2	5 5/8	4 1/2	44	3.1
		3	•	11 5/8	21 7/8	6 1/3	4 7/8	22 1/2	5 5/8	-		
LCR 3/5	3/4	1	•	12 1/2	23 7/8	6 1/3	4 7/8	23 1/4	5 5/8	4 1/2	49	3.1
		3	•	12 1/2	22 5/8	6 1/3	4 7/8	23 1/4	5 5/8	-		
LCR 3/6	1	1	•	13 1/8	25 1/3	6 1/3	4 7/8	24 1/3	5 5/8	4 1/2	55	3.1
		3	•	13 1/8	24 1/2	6 1/3	4 7/8	24	5 5/8	-		
LCR 3/7	1 1/2	1	•	13 7/8	24 7/8	7 1/4	5 1/3	24 7/8	6 1/2	4 7/8	60	3.1
		3	•	13 7/8	24 1/4	7 1/4	5 1/3	24 1/4	6 1/2	-		
LCR 3/8	1 1/2	1	•	14 3/4	25 3/4	7 1/4	5 1/3	25 3/4	6 1/2	4 7/8	62	3.1
		3	•	14 3/4	25 1/4	7 1/4	5 1/3	25 1/4	6 1/2	-		
LCR 3/9	1 1/2	1	•	15 1/2	26 1/2	7 1/4	5 1/3	26 1/2	6 1/2	4 7/8	63	3.1
		3	•	15 1/2	25 7/8	7 1/4	5 1/3	25 7/8	6 1/2	-		
LCR 3/10	2	1	•	16 1/8	27 3/4	7 1/4	5 1/3	28 1/4	6 1/2	4 7/8	65	3.1
		3	•	16 1/8	27 1/4	7 1/4	5 1/3	27	6 1/2	-		
LCR 3/11	2	1	•	16 7/8	28 1/2	7 1/4	5 1/3	28 7/8	6 1/2	4 7/8	66	3.1
		3	•	16 7/8	27 7/8	7 1/4	5 1/3	27 3/4	6 1/2	-		
LCR 3/12	2	1	•	17 5/8	29 1/4	7 1/4	5 1/3	29 5/8	6 1/2	4 7/8	67	3.1
		3	•	17 5/8	28 5/8	7 1/4	5 1/3	28 1/2	6 1/2	-		
LCR 3/13	3	1	•	18 1/3	31 1/8	7 1/4	5 1/3	-	-	-	67	3.1
		3	•	18 1/3	30 1/8	7 1/4	5 1/3	-	-	-		
LCR 3/15	3	1	•	19 3/4	32 1/2	7 1/4	5 1/3	-	-	-	69	3.1
		3	•	19 3/4	31 1/2	7 1/4	5 1/3	-	-	-		
LCR 3/17	3	1	•	21 3/4	34 5/8	7 1/4	5 1/3	-	-	-	70	3.1
		3	•	21 3/4	33 5/8	7 1/4	5 1/3	-	-	-		
LCR 3/19	3	1	-	23 1/4	36	7 1/4	5 1/3	-	-	-	71	3.1
		3	-	23 1/4	35	7 1/4	5 1/3	-	-	-		
LCR 3/21	5	3	-	24 5/8	39 5/8	8 3/4	6 1/2	-	-	-	72	3.1
LCR 3/23	5	3	-	26	41	8 3/4	6 1/2	-	-	-	73	3.1
LCR 3/25	5	3	-	27 1/2	42 1/2	8 3/4	6 1/2	-	-	-	75	3.1

All dimensions in inches unless otherwise noted.

* Oval flanged pump B1 and B1+B2 dimension is one inch less than ANSI flanged pump and weight is approximately 9 lbs. less.

** Weights shown are in lbs. for pump end only.

• Available.

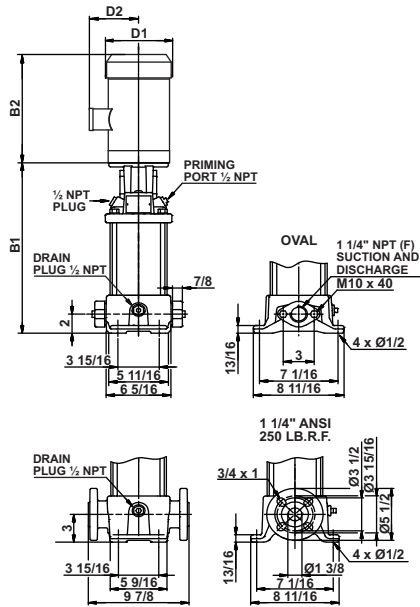


DIMENSIONS & WEIGHTS OF LCRI, LCRN PUMP

PUMP TYPE	HP	PH	ANSI DIMENSIONS [inch]							SHIP WEIGHT [lbs.]**	GROSS VOLUME [ft ³]
			B1	TEFC			ODP				
				B1+B2	D1	D2	B1+B2	D1	D2		
LCRI, LCRN 3/2	1/3	1	10 1/3	21 1/4	6 1/3	4 7/8	20 1/2	5 5/8	4 1/2	34	3.1
		3	10 1/3	20 1/4	6 1/3	4 7/8	20 1/2	5 5/8	-		
LCRI, LCRN 3/3	1/2	1	11 1/8	21 7/8	6 1/3	4 7/8	21 1/8	5 5/8	4 1/2	39	3.1
		3	11 1/8	21	6 1/3	4 7/8	21 1/8	5 5/8	-		
LCRI, LCRN 3/4	3/4	1	11 7/8	23 1/4	6 1/3	4 7/8	22 5/8	5 5/8	4 1/2	44	3.1
		3	11 7/8	22	6 1/3	4 7/8	22 5/8	5 5/8	-		
LCRI, LCRN 3/5	3/4	1	12 1/2	24	6 1/3	4 7/8	23 1/3	5 5/8	4 1/2	49	3.1
		3	12 1/2	22 3/4	6 1/3	4 7/8	23 1/3	5 5/8	-		
LCRI, LCRN 3/6	1	1	13 1/4	25 1/2	6 1/3	4 7/8	24 1/2	5 5/8	4 1/2	55	3.1
		3	13 1/4	24 5/8	6 1/3	4 7/8	24	5 5/8	-		
LCRI, LCRN 3/7	1 1/2	1	14	25	7 1/4	5 1/3	25	6 1/2	4 7/8	60	3.1
		3	14	24 1/3	7 1/4	5 1/3	24 1/3	6 1/2	-		
LCRI, LCRN 3/8	1 1/2	1	14 7/8	25 7/8	7 1/4	5 1/3	25 7/8	6 1/2	4 7/8	62	3.1
		3	14 7/8	25 1/3	7 1/4	5 1/3	25 1/3	6 1/2	-		
LCRI, LCRN 3/9	1 1/2	1	15 5/8	26 5/8	7 1/4	5 1/3	26 5/8	6 1/2	4 7/8	63	3.1
		3	15 5/8	26	7 1/4	5 1/3	26	6 1/2	-		
LCRI, LCRN 3/10	2	1	16 1/4	27 7/8	7 1/4	5 1/3	28 1/3	6 1/2	4 7/8	65	3.1
		3	16 1/4	27 1/3	7 1/4	5 1/3	27 1/8	6 1/2	-		
LCRI, LCRN 3/11	2	1	17	28 5/8	7 1/4	5 1/3	29	6 1/2	4 7/8	66	3.1
		3	17	28	7 1/4	5 1/3	27 7/8	6 1/2	-		
LCRI, LCRN 3/12	2	1	17 3/4	29 1/3	7 1/4	5 1/3	29 3/4	6 1/2	4 7/8	67	3.1
		3	17 3/4	28 3/4	7 1/4	5 1/3	28 1/2	6 1/2	-		
LCRI, LCRN 3/13	3	1	18 1/2	31 1/4	7 1/4	5 1/3	-	-	-	67	3.1
		3	18 1/2	30 1/4	7 1/4	5 1/3	-	-	-		
LCRI, LCRN 3/15	3	1	19 7/8	32 5/8	7 1/4	5 1/3	-	-	-	69	3.1
		3	19 7/8	31 5/8	7 1/4	5 1/3	-	-	-		
LCRI, LCRN 3/17	3	1	21 7/8	34 3/4	7 1/4	5 1/3	-	-	-	70	3.1
		3	21 7/8	33 3/4	7 1/4	5 1/3	-	-	-		
LCRI, LCRN 3/19	3	1	23 1/3	36 1/8	7 1/4	5 1/3	-	-	-	71	3.1
		3	23 1/3	35 1/8	7 1/4	5 1/3	-	-	-		
LCRI, LCRN 3/21	5	3	24 3/4	39 5/8	8 3/4	6 1/2	-	-	-	72	3.1
LCRI, LCRN 3/23	5	3	26 1/8	41 1/8	8 3/4	6 1/2	-	-	-	73	3.1
LCRI, LCRN 3/25	5	3	27 1/2	42 1/2	8 3/4	6 1/2	-	-	-	75	3.1

All dimensions in inches unless otherwise noted.

** Weights shown are in lbs. for pump end only.



DIMENSIONS & WEIGHTS OF LCR PUMP

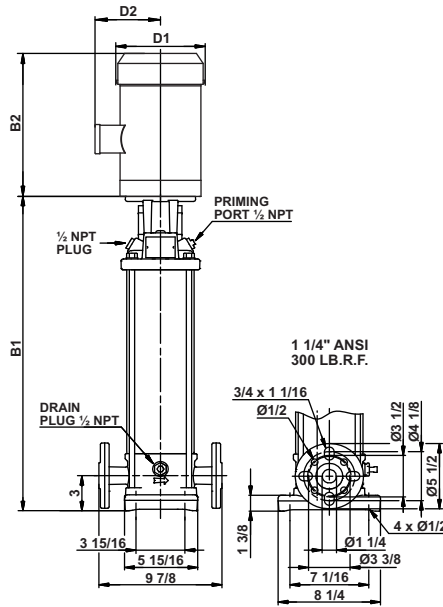
PUMP TYPE	HP	PH	OVAL*	ANSI DIMENSIONS [inch]							SHIP WEIGHT [lbs.]**	GROSS VOLUME [ft ³]
				B1	TEFC			ODP				
					B1+B2	D1	D2	B1+B2	D1	D2		
LCR 4 - 2-1	1/2	1	•	11	21 7/8	6 1/3	4 7/8	21	5 5/8	4 1/2	45	3.1
		3	•	11	20 7/8	6 1/3	4 7/8	21	5 5/8	-		
LCR 4 - 2	3/4	1	•	11	22 1/2	6 1/3	4 7/8	21 7/8	5 5/8	4 1/2	45	3.1
		3	•	11	21 1/4	6 1/3	4 7/8	21 7/8	5 5/8	-		
LCR 4 - 3	1 1/2	1	•	12	23 1/8	7 1/4	5 1/3	23 1/8	6 1/2	4 7/8	45	3.1
		3	•	12	22 1/2	7 1/4	5 1/3	22 1/2	6 1/2	-		
LCR 4 - 4	1 1/2	1	•	13 1/8	24 1/8	7 1/4	5 1/3	24 1/8	6 1/2	4 7/8	46	3.1
		3	•	13 1/8	23 1/2	7 1/4	5 1/3	23 1/2	6 1/2	-		
LCR 4 - 5	2	1	•	14 1/2	26	7 1/4	5 1/3	26 1/2	6 1/2	4 7/8	51	3.1
		3	•	14 1/2	25 1/2	7 1/4	5 1/3	25 1/4	6 1/2	-		
LCR 4 - 6	3	1	•	15 1/2	28 1/4	7 1/4	5 1/3	-	-	-	58	3.1
		3	•	15 1/2	27 1/4	7 1/4	5 1/3	-	-	-		
LCR 4 - 8-7	3	1	•	17 5/8	30 1/2	7 1/4	5 1/3	-	-	-	63	3.1
		3	•	17 5/8	29 1/2	7 1/4	5 1/3	-	-	-		
LCR 4 - 8	3	1	•	17 5/8	30 1/2	7 1/4	5 1/3	-	-	-	63	3.1
		3	•	17 5/8	29 1/2	7 1/4	5 1/3	-	-	-		
LCR 4 - 9	5	3	•	19 1/4	34 1/4	8 3/4	6 1/2	-	-	-	66	3.1
LCR 4 - 10	5	3	•	20 1/3	35 1/3	8 3/4	6 1/2	-	-	-	66	3.1
LCR 4 - 11	5	3	•	21 1/2	36 1/3	8 3/4	6 1/2	-	-	-	67	3.1
LCR 4 - 12	5	3	-	22 1/2	37 1/2	8 3/4	6 1/2	-	-	-	67	3.1
LCR 4 - 13	5	3	-	23 1/2	38 1/2	8 3/4	6 1/2	-	-	-	68	3.1
LCR 4 - 14	5	3	-	24 5/8	39 5/8	8 3/4	6 1/2	-	-	-	69	3.1
LCR 4 - 15	7 1/2	3	-	25 5/8	40 5/8	8 3/4	6 1/2	-	-	-	69	3.1
LCR 4 - 16	7 1/2	3	-	26 3/4	41 3/4	8 3/4	6 1/2	-	-	-	70	3.1

All dimensions in inches unless otherwise noted.

* Oval flanged pump B1 and B1+B2 dimension is one inch less than ANSI flanged pump and weight is approximately 9 lbs. less.

** Weights shown are in lbs. for pump end only.

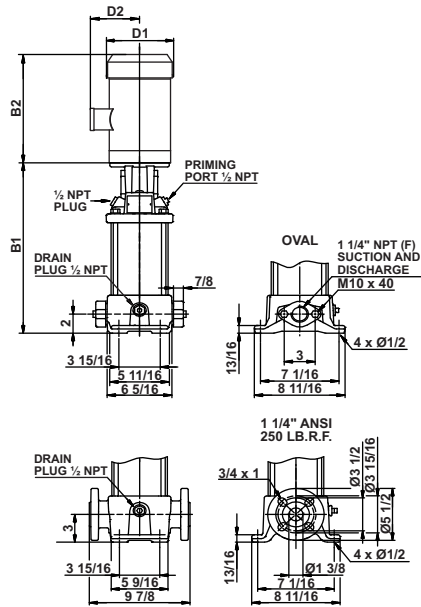
• Available.



DIMENSIONS & WEIGHTS OF LCRI, LCRN PUMP

PUMP TYPE	HP	PH	ANSI DIMENSIONS [inch]							SHIP WEIGHT [lbs.]*	GROSS VOLUME [ft ³]
			B1	TEFC			ODP				
				B1+B2	D1	D2	B1+B2	D1	D2		
LCRI, LCRN 4 - 2-1	1/2	1	11 1/8	21 7/8	6 1/3	4 7/8	21 1/8	5 5/8	4 1/2	45	3.1
			3	11 1/8	21	6 1/3	4 7/8	21 1/8	5 5/8		
LCRI, LCRN 4 - 2	3/4	3	11 1/8	22 1/2	6 1/3	4 7/8	22	5 5/8	4 1/2	45	3.1
			3	11 1/8	21 1/4	6 1/3	4 7/8	22	5 5/8		
LCRI, LCRN 4 - 3	1 1/2	1	12 1/8	23 1/8	7 1/4	5 1/3	23 1/4	6 1/2	4 7/8	45	3.1
			3	12 1/8	22 1/2	7 1/4	5 1/3	22 5/8	6 1/2		
LCRI, LCRN 4 - 4	1 1/2	1	13 1/4	24 2/8	7 1/4	5 1/3	24 1/4	6 1/2	4 7/8	46	3.1
			3	13 1/4	23 1/2	7 1/4	5 1/3	23 5/8	6 1/2		
LCRI, LCRN 4 - 5	2	1	14 1/2	26 1/7	7 1/4	5 1/3	26 1/2	6 1/2	4 7/8	51	3.1
			3	14 1/2	25 1/2	7 1/4	5 1/3	25 1/3	6 1/2		
LCRI, LCRN 4 - 6	3	1	15 5/8	28 2/4	7 1/4	5 1/3	-	-	-	58	3.1
			3	15 5/8	27 2/4	7 1/4	5 1/3	-	-		
LCRI, LCRN 4 - 8-7	3	1	17 3/4	30 1/2	7 1/4	5 1/3	-	-	-	63	3.1
			3	17 3/4	29 1/2	7 1/4	5 1/3	-	-		
LCRI, LCRN 4 - 8	3	1	17 3/4	30 1/2	7 1/4	5 1/3	-	-	-	63	3.1
			3	17 3/4	29 1/2	7 1/4	5 1/3	-	-		
LCRI, LCRN 4 - 9	5	3	19 1/2	34 1/3	8 3/4	6 1/2	-	-	-	66	3.1
LCRI, LCRN 4 - 10	5	3	20 1/2	35 1/2	8 3/4	6 1/2	-	-	-	66	3.1
LCRI, LCRN 4 - 11	5	3	21 1/2	36 1/2	8 3/4	6 1/2	-	-	-	67	3.1
LCRI, LCRN 4 - 12	5	3	22 5/8	37 1/2	8 3/4	6 1/2	-	-	-	67	3.1
LCRI, LCRN 4 - 13	5	3	23 5/8	38 1/2	8 3/4	6 1/2	-	-	-	68	3.1
LCRI, LCRN 4 - 14	5	3	24 3/4	39 5/8	8 3/4	6 1/2	-	-	-	69	3.1
LCRI, LCRN 4 - 15	7 1/2	3	25 3/4	40 3/4	8 3/4	6 1/2	-	-	-	69	3.1
LCRI, LCRN 4 - 16	7 1/2	3	26 7/8	41 3/4	8 3/4	6 1/2	-	-	-	70	3.1

All dimensions in inches unless otherwise noted.
 ** Weights shown are in lbs. for pump end only.



DIMENSIONS & WEIGHTS OF LCR PUMP

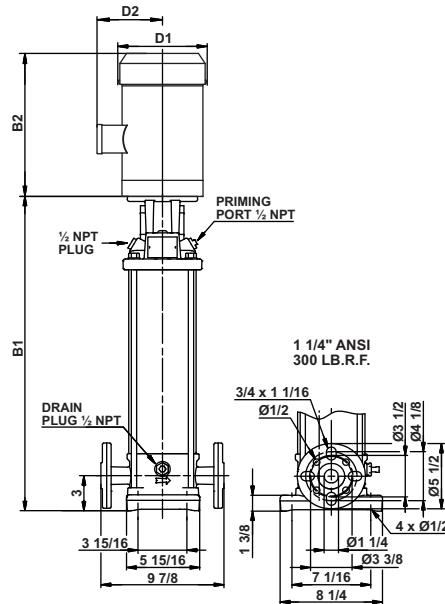
PUMP TYPE	HP	PH	OVAL*	ANSI DIMENSIONS [inch]							SHIP WEIGHT [lbs.]**	GROSS VOLUME [ft ³]
				B1	TEFC			ODP				
					B1+B2	D1	D2	B1+B2	D1	D2		
LCR 5/2	3/4	1	•	11	22 1/2	6 1/3	4 7/8	21 3/4	5 5/8	4 1/2	45	3.1
		3	•	11	21 1/4	6 1/3	4 7/8	21 3/4	5 5/8	-		
LCR 5/3	1	1	•	12	24 1/4	6 1/3	4 7/8	23 1/4	5 5/8	4 1/2	45	3.1
		3	•	12	23 1/2	6 1/3	4 7/8	22 7/8	5 5/8	-		
LCR 5/4	1 1/2	1	•	13 1/8	24 1/8	7 1/4	5 1/3	24 1/8	6 1/2	4 7/8	46	3.1
		3	•	13 1/8	23 1/2	7 1/4	5 1/3	23 1/2	6 1/2	-		
LCR 5/5	1 1/2	1	•	14 1/2	25 1/2	7 1/4	5 1/3	25 1/2	6 1/2	4 7/8	51	3.1
		3	•	14 1/2	24 7/8	7 1/4	5 1/3	24 7/8	6 1/2	-		
LCR 5/6	2	1	•	15 1/2	27 1/8	7 1/4	5 1/3	27 1/2	6 1/2	4 7/8	58	3.1
		3	•	15 1/2	26 1/2	7 1/4	5 1/3	26 1/3	6 1/2	-		
LCR 5/7	2	1	•	16 1/2	28 1/8	7 1/4	5 1/3	28 1/2	6 1/2	4 7/8	65	3.1
		3	•	16 1/2	27 1/2	7 1/4	5 1/3	27 1/3	6 1/2	-		
LCR 5/8	3	1	•	17 5/8	30 1/2	7 1/4	5 1/3	-	-	-	66	3.1
		3	•	17 5/8	29 1/2	7 1/4	5 1/3	-	-	-		
LCR 5/9	3	1	•	19 1/4	32 1/8	7 1/4	5 1/3	-	-	-	66	3.1
		3	•	19 1/4	31 1/8	7 1/4	5 1/3	-	-	-		
LCR 5/10	3	1	•	20 1/3	33 1/8	7 1/4	5 1/3	-	-	-	66	3.1
		3	•	20 1/3	32 1/8	7 1/4	5 1/3	-	-	-		
LCR 5/11	5	3	•	21 1/2	36 1/3	8 3/4	6 1/2	-	-	-	67	3.1
LCR 5/12	5	3	•	22 1/2	37 1/2	8 3/4	6 1/2	-	-	-	67	3.1
LCR 5/13	5	3	•	23 1/2	38 1/2	8 3/4	6 1/2	-	-	-	68	3.1
LCR 5/14	5	3	•	24 5/8	39 5/8	8 3/4	6 1/2	-	-	-	69	3.1
LCR 5/15	5	3	•	25 5/8	40 5/8	8 3/4	6 1/2	-	-	-	69	3.1
LCR 5/16	5	3	•	26 3/4	41 5/8	8 3/4	6 1/2	-	-	-	70	3.1
LCR 5/18	7 1/2	3	-	29	44	8 3/4	6 1/2	-	-	-	79	3.1
LCR 5/20	7 1/2	3	-	31 1/8	46 1/8	8 3/4	6 1/2	-	-	-	91	4.2
LCR 5/22	7 1/2	3	-	33 1/4	48 1/4	8 3/4	6 1/2	-	-	-	100	4.2
LCR 5/24	7 1/2	3	-	35 1/3	50 1/4	8 3/4	6 1/2	-	-	-	109	4.2

All dimensions in inches unless otherwise noted.

* Oval flanged pump B1 and B1+B2 dimension is one inch less than ANSI flanged pump and weight is approximately 9 lbs. less.

** Weights shown are in lbs. for pump end only.

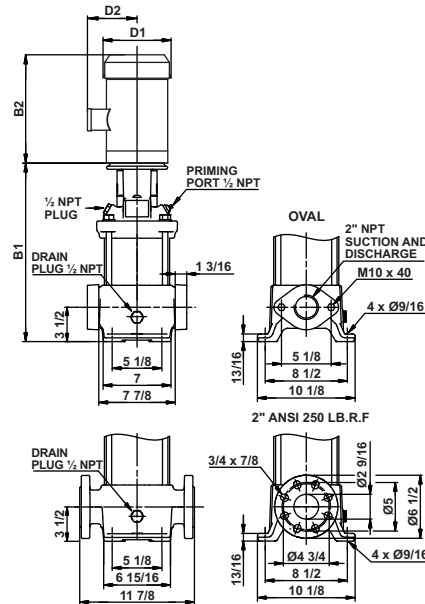
• Available.



DIMENSIONS & WEIGHTS OF LCRI, LCRN PUMP

PUMP TYPE	HP	PH	ANSI DIMENSIONS [inch]							SHIP WEIGHT [lbs.]**	GROSS VOLUME [ft ³]
			B1	TEFC			ODP				
				B1+B2	D1	D2	B1+B2	D1	D2		
LCRI, LCRN 5/2	3/4	1	11 1/8	22 1/2	6 1/3	4 7/8	22	5 5/8	4 1/2	45	3.1
		3	11 1/8	21 1/3	6 1/3	4 7/8	22	5 5/8	-		
LCRI, LCRN 5/3	1	1	12 1/8	24 1/3	6 1/3	4 7/8	23 1/3	5 5/8	4 1/2	45	3.1
		3	12 1/8	23 5/8	6 1/3	4 7/8	23	5 5/8	-		
LCRI, LCRN 5/4	1 1/2	1	13 1/4	24 1/4	7 1/4	5 1/3	24 1/4	6 1/2	4 7/8	46	3.1
		3	13 1/4	23 5/8	7 1/4	5 1/3	23 5/8	6 1/2	-		
LCRI, LCRN 5/5	1 1/2	1	14 1/2	25 1/2	7 1/4	5 1/3	25 1/2	6 1/2	4 7/8	51	3.1
		3	14 1/2	25	7 1/4	5 1/3	25	6 1/2	-		
LCRI, LCRN 5/6	2	1	15 5/8	27 1/4	7 1/4	5 1/3	27 5/8	6 1/2	4 7/8	58	3.1
		3	15 5/8	26 5/8	7 1/4	5 1/3	26 1/2	6 1/2	-		
LCRI, LCRN 5/7	2	1	16 5/8	28 1/4	7 1/4	5 1/3	28 5/8	6 1/2	4 7/8	65	3.1
		3	16 5/8	27 5/8	7 1/4	5 1/3	27 1/2	6 1/2	-		
LCRI, LCRN 5/8	3	1	17 3/4	30 1/2	7 1/4	5 1/3	-	-	-	66	3.1
		3	17 3/4	29 1/2	7 1/4	5 1/3	-	-	-		
LCRI, LCRN 5/9	3	1	19 1/2	32 1/4	7 1/4	5 1/3	-	-	-	66	3.1
		3	19 1/2	31 1/4	7 1/4	5 1/3	-	-	-		
LCRI, LCRN 5/10	3	1	20 1/2	33 1/4	7 1/4	5 1/3	-	-	-	66	3.1
		3	20 1/2	32 1/4	7 1/4	5 1/3	-	-	-		
LCRI, LCRN 5/11	5	3	21 1/2	36 1/2	8 3/4	6 1/2	-	-	-	67	3.1
LCRI, LCRN 5/12	5	3	22 5/8	37 1/2	8 3/4	6 1/2	-	-	-	67	3.1
LCRI, LCRN 5/13	5	3	23 5/8	38 5/8	8 3/4	6 1/2	-	-	-	68	3.1
LCRI, LCRN 5/14	5	3	24 3/4	39 5/8	8 3/4	6 1/2	-	-	-	69	3.1
LCRI, LCRN 5/15	5	3	25 3/4	40 3/4	8 3/4	6 1/2	-	-	-	69	3.1
LCRI, LCRN 5/16	5	3	26 7/8	41 7/8	8 3/4	6 1/2	-	-	-	70	3.1
LCRI, LCRN 5/18	7 1/2	3	29 1/8	44 1/8	8 3/4	6 1/2	-	-	-	79	3.1
LCRI, LCRN 5/20	7 1/2	3	31 1/4	46 1/4	8 3/4	6 1/2	-	-	-	91	4.2
LCRI, LCRN 5/22	7 1/2	3	33 1/3	48 1/3	8 3/4	6 1/2	-	-	-	100	4.2
LCRI, LCRN 5/24	7 1/2	3	35 1/2	50 1/2	8 3/4	6 1/2	-	-	-	109	4.2

All dimensions in inches unless otherwise noted.
 ** Weights shown are in lbs. for pump end only.



DIMENSIONS & WEIGHTS OF LCR PUMP

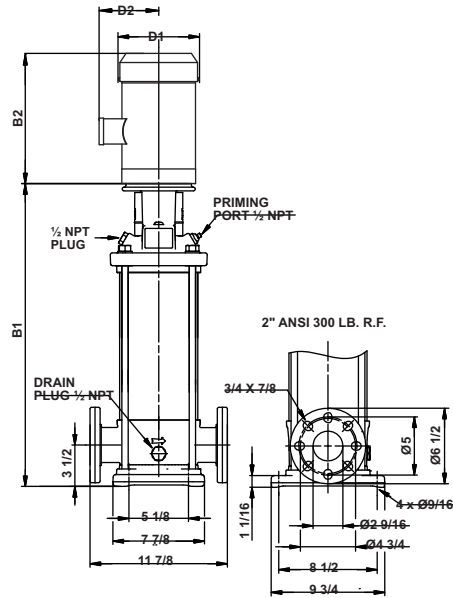
PUMP TYPE	HP	PH	OVAL*	ANSI DIMENSIONS [inch]						SHIP WEIGHT [lbs.]**	GROSS VOLUME [ft ³]	
				B1	TEFC			ODP				
					B1+B2	D1	D2	B1+B2	D1			D2
LCR 10/1	3/4	1	•	13 1/2	24 7/8	6 1/3	4 7/8	24 1/3	5 5/8	4 1/2	72	3.1
		3	•	13 1/2	23 3/4	6 1/3	4 7/8	24 1/3	5 5/8	-		
LCR 10/2	1 1/2	1	•	13 5/8	24 5/8	7 1/4	5 1/3	24 5/8	6 1/2	4 7/8	74	3.1
		3	•	13 5/8	24 1/8	7 1/4	5 1/3	24 1/8	6 1/2	-		
LCR 10/3	3	1	•	14 7/8	27 5/8	7 1/4	5 1/3	-	-	-	76	3.1
		3	•	14 7/8	26 5/8	7 1/4	5 1/3	-	-	-		
LCR 10/4	3	1	•	16 5/8	29 1/2	7 1/4	5 1/3	-	-	-	76	3.1
		3	•	16 5/8	28 1/2	7 1/4	5 1/3	-	-	-		
LCR 10/5	5	3	•	17 7/8	32 3/4	8 3/4	6 1/2	-	-	-	78	3.1
LCR 10/6	5	3	•	19	34	8 3/4	6 1/2	-	-	-	80	3.1
LCR 10/7	5	3	•	20 1/3	35 1/3	8 3/4	6 1/2	-	-	-	81	3.1
LCR 10/8	7 1/2	3	-	21 5/8	36 1/2	8 3/4	6 1/2	-	-	-	91	3.1
LCR 10/9	7 1/2	3	-	22 3/4	37 3/4	8 3/4	6 1/2	-	-	-	101	3.1
LCR 10/10	7 1/2	3	-	24	38 7/8	8 3/4	6 1/2	-	-	-	141	7.3
LCR 10/12	10	3	-	26 1/3	43	10 1/3	7 1/2	-	-	-	145	7.3
LCR 10/14	10	3	-	29 7/8	46 5/8	10 1/3	7 1/2	-	-	-	154	8.3
LCR 10/16	15	3	-	32 1/4	53 1/8	12 1/4	9 1/2	-	-	-	155	8.3
LCR 10/17	15	3	-	33 1/2	54 1/3	12 1/4	9 1/2	-	-	-	175	8.3

All dimensions in inches unless otherwise noted.

* Oval flanged pump B1 and B1+B2 dimension is equal to ANSI flanged pump and weight is approximately 3 lbs. less.

** Weights shown are in lbs. for pump end only.

• Available.

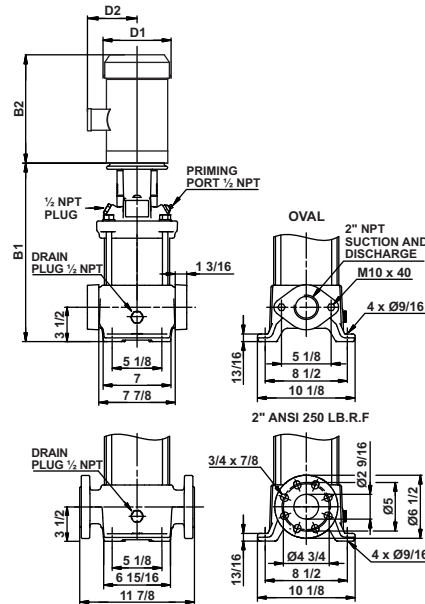


DIMENSIONS & WEIGHTS OF LCRI, LCRN PUMP

PUMP TYPE	HP	PH	ANSI DIMENSIONS [inch]							SHIP WEIGHT [lbs.]*	GROSS VOLUME [ft ³]
			B1	TEFC			ODP				
				B1+B2	D1	D2	B1+B2	D1	D2		
LCRI, LCRN 10/1	3/4	1	13 7/8	25 1/3	6 1/3	4 7/8	24 3/4	5 5/8	4 1/2	72	3.1
		3	13 7/8	24 1/8	6 1/3	4 7/8	24 3/4	5 5/8	-		
LCRI, LCRN 10/2	1 1/2	1	14	25 1/8	7 1/4	5 1/3	25 1/8	6 1/2	4 7/8	74	3.1
		3	14	24 1/2	7 1/4	5 1/3	24 1/2	6 1/2	-		
LCRI, LCRN 10/3	3	1	15 1/4	28	7 1/4	5 1/3	-	-	-	76	3.1
		3	15 1/4	27	7 1/4	5 1/3	-	-	-		
LCRI, LCRN 10/4	3	1	17	29 7/8	7 1/4	5 1/3	-	-	-	76	3.1
		3	17	28 7/8	7 1/4	5 1/3	-	-	-		
LCRI, LCRN 10/5	5	3	18 1/4	33 1/4	8 3/4	6 1/2	-	-	-	78	3.1
LCRI, LCRN 10/6	5	3	19 1/2	34 1/3	8 3/4	6 1/2	-	-	-	80	3.1
LCRI, LCRN 10/7	5	3	20 3/4	35 3/4	8 3/4	6 1/2	-	-	-	81	3.1
LCRI, LCRN 10/8	7 1/2	3	22	37	8 3/4	6 1/2	-	-	-	91	3.1
LCRI, LCRN 10/9	7 1/2	3	23 1/8	38 1/8	8 3/4	6 1/2	-	-	-	101	3.1
LCRI, LCRN 10/10	7 1/2	3	24 1/3	39 1/4	8 3/4	6 1/2	-	-	-	141	7.3
LCRI, LCRN 10/12	10	3	26 5/8	43 1/2	10 1/3	7 1/2	-	-	-	145	7.3
LCRI, LCRN 10/14	10	3	30 1/3	47	10 1/3	7 1/2	-	-	-	154	8.3
LCRI, LCRN 10/16	15	3	32 5/8	53 1/2	12 1/4	9 1/2	-	-	-	155	8.3
LCRI, LCRN 10/17	15	3	33 7/8	54 3/4	12 1/4	9 1/2	-	-	-	175	8.3

All dimensions in inches unless otherwise noted.

** Weights shown are in lbs. for pump end only.



DIMENSIONS & WEIGHTS OF LCR PUMP

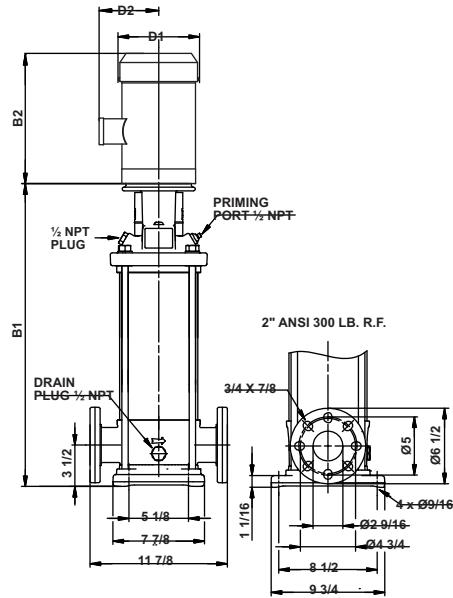
PUMP TYPE	HP	PH	OVAL*	ANSI DIMENSIONS [inch]						SHIP WEIGHT [lbs.]**	GROSS VOLUME [ft³]	
				B1	TEFC			ODP				
					B1+B2	D1	D2	B1+B2	D1			D2
LCR 15/1	2	1	•	15 3/4	27 1/3	7 1/4	5 1/3	27 3/4	6 1/2	4 7/8	94	3.1
LCR 15/2	5	3	•	15 3/4	26 3/4	7 1/4	5 1/3	26 5/8	6 1/2	-	96	3.1
LCR 15/3	5	3	•	16 1/3	31 1/3	8 3/4	6 1/2	-	-	-	98	3.1
LCR 15/4	7 1/2	3	•	18 1/3	33 1/4	8 3/4	6 1/2	-	-	-	131	6.3
LCR 15/5	10	3	•	20 1/8	35	8 3/4	6 1/2	-	-	-	134	6.3
LCR 15/6	10	3	-	21 7/8	38 5/8	10 1/3	7 1/2	-	-	-	145	6.3
LCR 15/7	15	3	-	24 7/8	41 5/8	10 1/3	7 1/2	-	-	-	151	8.9
LCR 15/8	15	3	-	26 5/8	47 1/2	12 1/4	9 1/2	-	-	-	153	8.9
LCR 15/9	15	3	-	28 1/2	49 1/3	12 1/4	9 1/2	-	-	-	159	10.2
LCR 15/10	20	3	-	30 1/4	51 1/8	12 1/4	9 1/2	-	-	-	174	10.2
LCR 15/12	25	3	-	35	55 7/8	12 1/4	9 1/2	-	-	-	210	11.5
LCR 15/12	25	3	-	38 1/2	63 3/4	14 1/8	11 5/8	-	-	-	-	-

All dimensions in inches unless otherwise noted.

* Oval flanged pump B1 and B1+B2 dimension is equal to ANSI flanged pump and weight is approximately 3 lbs. less.

** Weights shown are in lbs. for pump end only.

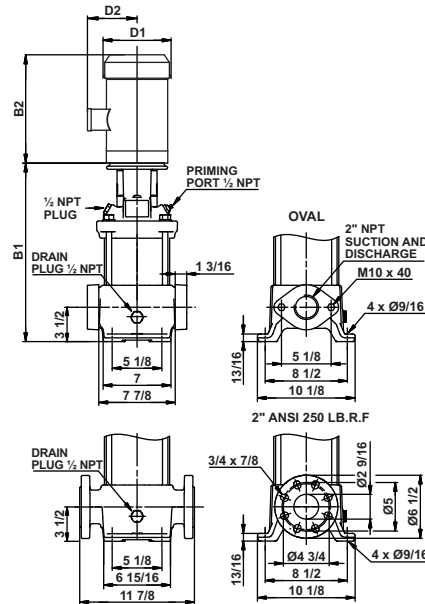
• Available.



DIMENSIONS & WEIGHTS OF LCRI, LCRN PUMP

PUMP TYPE	HP	PH	ANSI DIMENSIONS [inch]							SHIP WEIGHT [lbs.]**	GROSS VOLUME [ft ³]
			B1	TEFC			ODP				
				B1+B2	D1	D2	B1+B2	D1	D2		
LCRI, LCRN 15/1	2	1	15 3/4	27 1/3	7 1/4	5 1/3	27 3/4	6 1/2	4 7/8	94	3.1
LCRI, LCRN 15/2	5	3	15 3/4	26 3/4	7 1/4	5 1/3	26 5/8	6 1/2	-	96	3.1
LCRI, LCRN 15/3	5	3	16 1/3	31 1/3	8 3/4	6 1/2	-	-	-	98	3.1
LCRI, LCRN 15/4	7 1/2	3	18 1/3	33 1/4	8 3/4	6 1/2	-	-	-	131	6.3
LCRI, LCRN 15/5	10	3	20 1/8	35	8 3/4	6 1/2	-	-	-	134	6.3
LCRI, LCRN 15/6	10	3	21 7/8	38 5/8	10 1/3	7 1/2	-	-	-	145	6.3
LCRI, LCRN 15/7	15	3	24 7/8	41 5/8	10 1/3	7 1/2	-	-	-	151	8.9
LCRI, LCRN 15/8	15	3	26 5/8	47 1/2	12 1/4	9 1/2	-	-	-	153	8.9
LCRI, LCRN 15/9	15	3	28 1/2	49 1/3	12 1/4	9 1/2	-	-	-	159	10.2
LCRI, LCRN 15/10	15	3	30 1/4	51 1/8	12 1/4	9 1/2	-	-	-	174	10.2
LCRI, LCRN 15/12	20	3	35	55 7/8	12 1/4	9 1/2	-	-	-	210	11.5
LCRI, LCRN 15/12	25	3	38 1/2	63 3/4	14 1/8	11 5/8	-	-	-		

All dimensions in inches unless otherwise noted.
 ** Weights shown are in lbs. for pump end only.



DIMENSIONS & WEIGHTS OF LCR PUMP

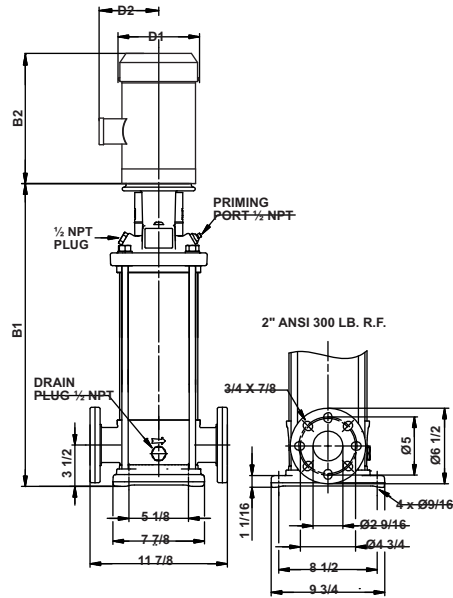
PUMP TYPE	HP	PH	OVAL*	ANSI DIMENSIONS [inch]				SHIP WEIGHT [lbs.]**	GROSS VOLUME [ft³]
				TEFC					
				B1	B1+B2	D1	D2		
LCR 20/1	3	1	•	15 3/4	28 1/2	7 1/4	5 1/3	92	3.1
LCR 20/2	5	3	•	15 3/4	27 1/2	7 1/4	5 1/3	93	3.1
LCR 20/3	7 1/2	3	•	16 1/3	31 1/3	8 3/4	6 1/2	135	6.3
LCR 20/4	10	3	•	18 1/3	33 1/4	8 3/4	6 1/2	138	6.3
LCR 20/5	15	3	•	21 1/3	38 1/8	10 1/3	7 1/2	144	8.0
LCR 20/6	15	3	•	23 1/8	44	12 1/4	9 1/2	146	8.0
LCR 20/7	20	3	•	24 7/8	45 3/4	12 1/4	9 1/2	152	8.9
LCR 20/8	20	3	-	26 5/8	47 1/2	12 1/4	9 1/2	154	8.9
LCR 20/10	25	3	-	31 1/2	52 1/3	12 1/4	9 1/2	188	10.2
				35	60 1/4	14 1/8	11 5/8		

All dimensions in inches unless otherwise noted.

* Oval flanged pump B1 and B1+B2 dimension is equal to ANSI flanged pump and weight is approximately 3 lbs. less.

** Weights shown are in lbs. for pump end only.

• Available.

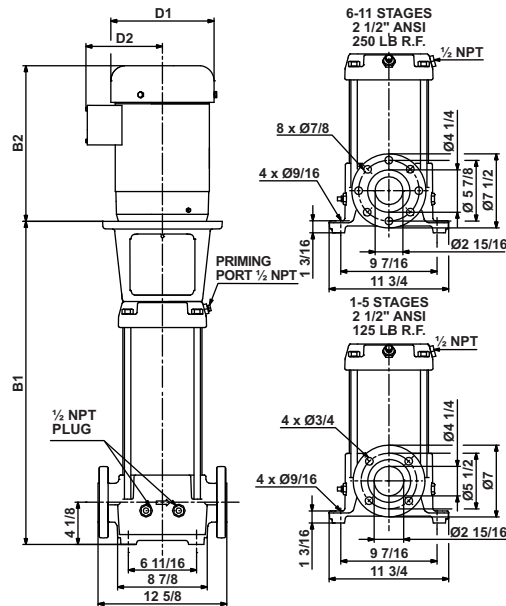


DIMENSIONS & WEIGHTS OF LCRI, LCRN PUMP

PUMP TYPE	HP	PH	ANSI DIMENSIONS [inch]				SHIP WEIGHT [lbs.]**	GROSS VOLUME [ft³]
			TEFC					
			B1	B1+B2	D1	D2		
LCRI, LCRN 20/1	3	1	15 5/8	28 1/2	7 1/4	5 1/3	92	3.1
		3	15 5/8	27 1/2	7 1/4	5 1/3		
LCRI, LCRN 20/2	5	3	16 1/4	31 1/4	8 3/4	6 1/2	93	3.1
LCRI, LCRN 20/3	7 1/2	3	18 1/4	33 1/4	8 3/4	6 1/2	135	6.3
LCRI, LCRN 20/4	10	3	21 1/4	38	10 1/3	7 1/2	138	6.3
LCRI, LCRN 20/5	15	3	23	43 7/8	12 1/4	9 1/2	144	8.0
LCRI, LCRN 20/6	15	3	24 7/8	45 5/8	12 1/4	9 1/2	146	8.0
LCRI, LCRN 20/7	20	3	26 5/8	47 1/2	12 1/4	9 1/2	152	8.9
LCRI, LCRN 20/8	20	3	31 1/3	52 1/4	12 1/4	9 1/2	154	8.9
LCRI, LCRN 20/10	25	3	34 7/8	60 1/8	14 1/8	11 5/8	188	10.2

All dimensions in inches unless otherwise noted.

** Weights shown are in lbs. for pump end only.

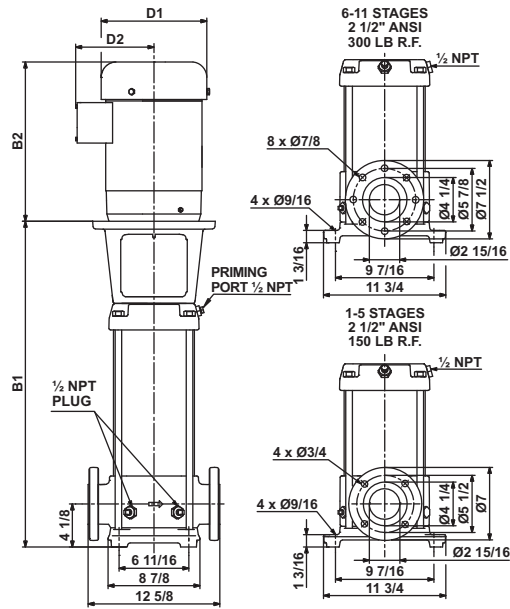


DIMENSIONS & WEIGHTS OF LCR PUMP

PUMP TYPE	HP	PH	ANSI DIMENSIONS [inch]				SHIP WEIGHT [lbs.]**	GROSS VOLUME [ft ³]
			TEFC					
			B1	B1+B2	D1	D2		
LCR 32/1-1	3	1	19 7/8	32 5/8	7 1/4	5 1/3	153	6.3
		3	19 7/8	31 5/8	7 1/4	5 1/3		
LCR 32/1	5	3	19 7/8	34 7/8	8 3/4	6 1/2	153	6.3
LCR 32/2-2	7 1/2	3	22 5/8	37 5/8	8 3/4	6 1/2	160	6.3
LCR 32/2-1	7 1/2	3	22 5/8	37 5/8	8 3/4	6 1/2	160	6.3
LCR 32/2	7 1/2	3	22 5/8	37 5/8	8 3/4	6 1/2	160	6.3
LCR 32/3-2	10	3	25 1/3	42 1/8	10 1/3	7 1/2	171	7.3
LCR 32/3	15	3	25 1/3	46 1/4	12 1/4	9 1/2	171	7.3
LCR 32/4-2	15	3	28 1/8	49	12 1/4	9 1/2	178	7.3
LCR 32/4	15	3	28 1/8	49	12 1/4	9 1/2	178	7.3
LCR 32/5-2	20	3	35 1/4	56 1/8	12 1/4	9 1/2	198	8.3
LCR 32/5	20	3	35 1/4	56 1/8	12 1/4	9 1/2	198	8.3
LCR 32/6-2	25	3	38	63 1/4	14 1/8	11 5/8	213	9.4
LCR 32/6	25	3	38	63 1/4	14 1/8	11 5/8	213	9.4
LCR 32/7-2	25	3	40 3/4	66	14 1/8	11 5/8	217	9.4
LCR 32/7	30	3	40 3/4	66	14 1/8	11 5/8	217	9.4
LCR 32/8-2	30	3	43 1/2	68 3/4	14 1/8	11 5/8	233	13.2
LCR 32/8	30	3	43 1/2	68 3/4	14 1/8	11 5/8	233	13.2
LCR 32/9-2	40	3	46 1/4	73 7/8	15 5/8	12	240	13.2
LCR 32/9	40	3	46 1/4	73 7/8	15 5/8	12	240	13.2
LCR 32/10-2	40	3	49	76 5/8	15 5/8	12	313	13.2
LCR 32/10	40	3	49	76 5/8	15 5/8	12	313	13.2
LCR 32/11-2	40	3	51 3/4	79 1/3	15 5/8	12	320	14.0

All dimensions in inches unless otherwise noted.

** Weights shown are in lbs. for pump end only.

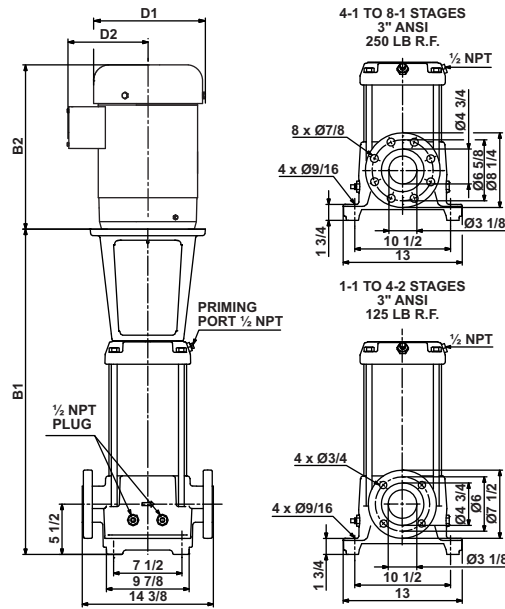


DIMENSIONS & WEIGHTS OF LCRI, LCRN PUMP

PUMP TYPE	HP	PH	ANSI DIMENSIONS [inch]				SHIP WEIGHT [lbs.]**	GROSS VOLUME [ft ³]
			TEFC					
			B1	B1+B2	D1	D2		
LCRI, LCRN 32/1-1	3	1	19 7/8	32 5/8	7 1/4	5 1/3	153	6.3
		3	19 7/8	31 5/8	7 1/4	5 1/3		
LCRI, LCRN 32/1	5	3	19 7/8	34 7/8	8 3/4	6 1/2	153	6.3
LCRI, LCRN 32/2-2	7 1/2	3	22 5/8	37 5/8	8 3/4	6 1/2	160	6.3
LCRI, LCRN 32/2-1	7 1/2	3	22 5/8	37 5/8	8 3/4	6 1/2	160	6.3
LCRI, LCRN 32/2	7 1/2	3	22 5/8	37 5/8	8 3/4	6 1/2	160	6.3
LCRI, LCRN 32/3-2	10	3	25 1/3	42 1/8	10 1/3	7 1/2	171	7.3
LCRI, LCRN 32/3	15	3	25 1/3	46 1/4	12 1/4	9 1/2	171	7.3
LCRI, LCRN 32/4-2	15	3	28 1/8	49	12 1/4	9 1/2	178	7.3
LCRI, LCRN 32/4	15	3	28 1/8	49	12 1/4	9 1/2	178	7.3
LCRI, LCRN 32/5-2	20	3	35 1/4	56 1/8	12 1/4	9 1/2	198	8.3
LCRI, LCRN 32/5	20	3	35 1/4	56 1/8	12 1/4	9 1/2	198	8.3
LCRI, LCRN 32/6-2	25	3	38	63 1/4	14 1/8	11 5/8	213	9.4
LCRI, LCRN 32/6	25	3	38	63 1/4	14 1/8	11 5/8	213	9.4
LCRI, LCRN 32/7-2	25	3	40 3/4	66	14 1/8	11 5/8	217	9.4
LCRI, LCRN 32/7	30	3	40 3/4	66	14 1/8	11 5/8	217	9.4
LCRI, LCRN 32/8-2	30	3	43 1/2	68 3/4	14 1/8	11 5/8	233	13.2
LCRI, LCRN 32/8	30	3	43 1/2	68 3/4	14 1/8	11 5/8	233	13.2
LCRI, LCRN 32/9-2	40	3	46 1/4	73 7/8	15 5/8	12	240	13.2
LCRI, LCRN 32/9	40	3	46 1/4	73 7/8	15 5/8	12	240	13.2
LCRI, LCRN 32/10-2	40	3	49	76 5/8	15 5/8	12	313	13.2
LCRI, LCRN 32/10	40	3	49	76 5/8	15 5/8	12	313	13.2
LCRI, LCRN 32/11-2	40	3	51 3/4	79 1/3	15 5/8	12	320	14.0

All dimensions in inches unless otherwise noted.

** Weights shown are in lbs. for pump end only.

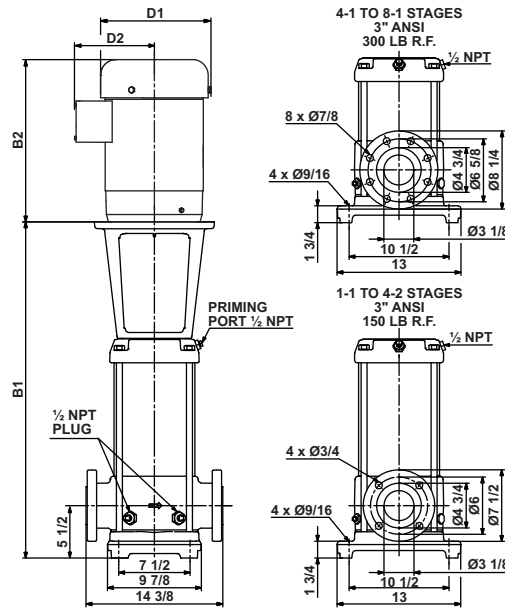


DIMENSIONS & WEIGHTS OF LCR PUMP

PUMP TYPE	HP	PH	ANSI DIMENSIONS [inch]				SHIP WEIGHT [lbs.]**	GROSS VOLUME [ft³]
			TEFC					
			B1	B1+B2	D1	D2		
LCR 45/1-1	7 1/2	3	22	37	8 3/4	6 1/2	169	9.2
LCR 45/1	7 1/2	3	22	37	8 3/4	6 1/2	169	9.2
LCR 45/2-2	15	3	25 1/8	46	12 1/4	9 1/2	183	9.2
LCR 45/2-1	15	3	25 1/8	46	12 1/4	9 1/2	183	9.2
LCR 45/2	15	3	25 1/8	46	12 1/4	9 1/2	183	9.2
LCR 45/3-2	20	3	32 5/8	53 1/2	12 1/4	9 1/2	201	12.2
LCR 45/3-1	25	3	32 5/8	57 7/8	14 1/8	11 5/8	201	12.2
LCR 45/3	25	3	32 5/8	57 7/8	14 1/8	11 5/8	201	12.2
LCR 45/4-2	30	3	35 3/4	61	14 1/8	11 5/8	215	12.2
LCR 45/4-1	30	3	35 3/4	61	14 1/8	11 5/8	215	12.2
LCR 45/4	30	3	35 3/4	61	14 1/8	11 5/8	215	12.2
LCR 45/5-2	40	3	39	66 1/2	15 5/8	12	235	13.8
LCR 45/5-1	40	3	39	66 1/2	15 5/8	12	235	13.8
LCR 45/5	40	3	39	66 1/2	15 5/8	12	235	13.8
LCR 45/6-2	50	3	42 1/8	69 5/8	15 5/8	12	260	15.3
LCR 45/6	50	3	42 1/8	69 5/8	15 5/8	12	260	15.3
LCR 45/7-2	50	3	45 1/4	72 3/4	15 5/8	12	273	15.3
LCR 45/7	60	3	45 1/4	72 3/4	17 1/4	12 7/8	273	15.3
LCR 45/8-1	60	3	48 1/3	75 7/8	17 1/4	12 7/8	298	16.8

All dimensions in inches unless otherwise noted.

** Weights shown are in lbs. for pump end only.



DIMENSIONS & WEIGHTS OF LCRI, LCRN PUMP

PUMP TYPE	HP	PH	ANSI DIMENSIONS [inch]				SHIP WEIGHT [lbs.]**	GROSS VOLUME [ft³]
			TEFC					
			B1	B1+B2	D1	D2		
LCRI, LCRN 45/1-1	7 1/2	3	22	37	8 3/4	6 1/2	169	9.2
LCRI, LCRN 45/1	7 1/2	3	22	37	8 3/4	6 1/2	169	9.2
LCRI, LCRN 45/2-2	15	3	25 1/8	46	12 1/4	9 1/2	183	9.2
LCRI, LCRN 45/2-1	15	3	25 1/8	46	12 1/4	9 1/2	183	9.2
LCRI, LCRN 45/2	15	3	25 1/8	46	12 1/4	9 1/2	183	9.2
LCRI, LCRN 45/3-2	20	3	32 5/8	53 1/2	12 1/4	9 1/2	201	12.2
LCRI, LCRN 45/3-1	25	3	32 5/8	57 7/8	14 1/8	11 5/8	201	12.2
LCRI, LCRN 45/3	25	3	32 5/8	57 7/8	14 1/8	11 5/8	201	12.2
LCRI, LCRN 45/4-2	30	3	35 3/4	61	14 1/8	11 5/8	215	12.2
LCRI, LCRN 45/4-1	30	3	35 3/4	61	14 1/8	11 5/8	215	12.2
LCRI, LCRN 45/4	30	3	35 3/4	61	14 1/8	11 5/8	215	12.2
LCRI, LCRN 45/5-2	40	3	39	66 1/2	15 5/8	12	235	13.8
LCRI, LCRN 45/5-1	40	3	39	66 1/2	15 5/8	12	235	13.8
LCRI, LCRN 45/5	40	3	39	66 1/2	15 5/8	12	235	13.8
LCRI, LCRN 45/6-2	50	3	42 1/8	69 5/8	15 5/8	12	260	15.3
LCRI, LCRN 45/6	50	3	42 1/8	69 5/8	15 5/8	12	260	15.3
LCRI, LCRN 45/7-2	50	3	45 1/4	72 3/4	15 5/8	12	273	15.3
LCRI, LCRN 45/7	60	3	45 1/4	72 3/4	17 1/4	12 7/8	273	15.3
LCRI, LCRN 45/8-1	60	3	48 1/3	75 7/8	17 1/4	12 7/8	298	16.8

All dimensions in inches unless otherwise noted.

** Weights shown are in lbs. for pump end only.



7150 W Roosevelt St Ste C107 Phoenix AZ 85043.
Ph: 888 938 3783, Fax: 888 638 0797

Product Improvement is a continuous process at 'SEI'. The data given in this publication is therefore subject to revision.

www.seipumps.com